



SHADED POLE MOTORS

INDICE

INDEX

MOTORI SERIE N

| | | |
|---|---------------------------------|------------|
| Motori N - Caratteristiche generali | N Motors - General features | pag. 3-4-5 |
| Motori N - Fissaggi | N Motors - Fixing | pag. 6 |
| Motori N - T1 | N Motors - T1 | pag. 7 |
| Motori N - T2 | N Motors - T2 | pag. 8 |
| Motori N - T3 | N Motors - T3 | pag. 9 |
| Motori N - T4 | N Motors - T4 | pag. 10 |
| Motori N - T5 | N Motors - T5 | pag. 11 |
| Motori N - Plug-in T1 | N Motors - Plug-in T1 | pag. 12 |
| Motori N - Plug-in T2 | N Motors - Plug-in T2 | pag. 13 |
| Motori N - Plug-in T3 | N Motors - Plug-in T3 | pag. 14 |
| Motori N - Plug-in T4 | N Motors - Plug-in T4 | pag. 15 |
| Motori N - Mixer | N Motors - Mixer | pag. 16 |
| Motori N - Componenti base | N Motors - Main components | pag. 17 |
| Motori N - Etichetta di identificazione | N Motors - Identification label | pag. 18 |

N SERIES MOTORS

VENTOLE

| | | |
|-----------------------------------|------------------------------------|---------|
| Ventole - Descrizione | Fan blades - General features | pag. 19 |
| Ventole - Limiti di accoppiamento | Fan blades - Coupling limits | pag. 20 |
| Ventole plastica - Curve | Plastic fan blades - Performance | pag. 21 |
| Ventole alluminio - Curve | Aluminium fan blades - Performance | pag. 22 |
| Ventole plastica - Aspiranti | Plastic fan blades - Sucking | pag. 23 |
| Ventole plastica - Prementi | Plastic fan blades - Blowing | pag. 24 |
| Ventole alluminio - Aspiranti | Aluminium fan blades - Sucking | pag. 25 |
| Ventole alluminio - Prementi | Aluminium fan blades - Blowing | pag. 26 |

FAN BLADES

ACCESSORI

| | | |
|---------------------------------|---------------------------------|---------|
| Accessori - Descrizione | Accessories - General features | pag. 27 |
| Anelli | Rings | pag. 28 |
| Griglie | Grids | pag. 29 |
| Staffe | Brackets | pag. 30 |
| Cavi - Tripolare con connettore | Cables - 3-Core cable with plug | pag. 31 |

ACCESSORIES

MOTORI SERIE M58

| | | |
|--------------------------|-------------------------------|---------|
| Motori M58 - Descrizione | M58 Motors - General features | pag. 32 |
| Motori M58 | M58 Motors | pag. 33 |
| Motori MA58 | MA58 Motors | pag. 34 |

M58 SERIES MOTORS

VENTOLE

| | | |
|----------------------------|-------------------------------|---------|
| Ventole alluminio per MA58 | Aluminium fan blades for MA58 | pag. 35 |
| Ventole plastica per MA58 | Plastic fan blades for MA58 | pag. 36 |

FAN BLADES

MOTORI SERIE CN

| | | |
|-------------------------|------------------------------|---------|
| Motori CN - Descrizione | CN Motors - General features | pag. 37 |
| Motori CN | CN Motors | pag. 38 |

CN SERIES MOTORS

MOTORI SERIE N

I motori Shaded Pole della **Serie N** sono diffusamente impiegati nella refrigerazione industriale, commerciale, gruppi condensanti, evaporanti e ventilazione di piccola portata. Sono motori monofase a 4 poli schermati funzionanti alla tensione nominale di 230 V, 50-60 Hz e con potenze da 5 a 34 Watt; classe di isolamento B, grado di protezione IP40.

N SERIES MOTORS

The shaded pole motors of the **N series** are widely used in the industrial and commercial refrigeration, in the condensing and evaporating units and in small ventilating units. These motors are 4 shaded poles, single phase, running at a nominal tension of 230 V, 50-60 Hz, with an output power ranging from 5 to 34 Watt; insulation class B and protection class IP40.



MOTORI SERIE N

N SERIES MOTORS

Caratteristiche generali

La nuova gamma dei motori serie N a poli schermati nasce dall'esperienza maturata in più di mezzo secolo di attività da ELCO, leader mondiale per know how, ricerca e sviluppo, unica in grado di offrire motori coperti da garanzia di 3 anni. Tutti i prodotti sono estremamente innovativi, per la volontà di ELCO di soddisfare ogni richiesta nel modo più appropriato e sfruttando tecnologie in continua evoluzione.

Materiali

Tutti i prodotti sono realizzati con componenti rigorosamente selezionati tra i migliori fornitori e ogni componente è sottoposto a stretti controlli come previsto dalle Normative ISO. I coperchi sono realizzati in lega di alluminio o in materiale termoplastico. Inoltre ELCO ha sviluppato una gamma di ventole utilizzando materie plastiche che ne riducono la deformazione, aumentano la stabilità dimensionale garantendone nel tempo la forma e la corretta bilanciatura.

Posizione di montaggio

Espressamente studiati per essere montati sia in orizzontale che verticale.

Senso di rotazione

Solitamente in senso antiorario vista lato albero, ma la conformazione di base del prodotto permette, con una semplice operazione, di invertire il senso di rotazione.

Prestazioni

La versione standard funziona a 230 V, 50-60 Hz, ma sono disponibili diverse tensioni e frequenze di alimentazione.

Funzionamento continuo con temperatura ambiente

-40°C +40°C grazie ad uno speciale lubrificante, che migliora le caratteristiche del motore ultima generazione.

General features

The new range of shaded pole motors is the result of more than 50 years experience of ELCO as world leader not only for the sales volumes, but also for know how, research and development. ELCO is today the only manufacturer offering a 3 years warranty on its shaded pole motors. All products are strongly innovative as ELCO wants to answer the request of the market asking for new technologies.

Materials

All products realised with components that are selected among the best possible suppliers and every component is severely tested as requested by the ISO standards. The end-shields are in aluminium or in thermoplastic material. ELCO has also developed a fan blades range in thermoplastic material. This material reduces the deformation of the blade and improves the dimensional stability granting the shape and the balancing of the blade itself.

Mounting

The motors are suitable for horizontal and vertical mounting.

Direction of rotation

The standard is CCW rotation shaft view, but with a very simple operation the CV motor can be supplied.

Performances

Standard version runs at 230 V, 50-60 Hz; other solutions are available on request.

Ambient temperature

-40°C +40°C; we use a special lubricant whose characteristics are better than those of the previous lubricants.

MOTORI SERIE N

N SERIES MOTORS

Classe di isolamento

B

Grado di protezione

Fino a IP44.

Protezione a rotore bloccato

per impedenza
o con protettore termico.

Supporto per albero motore

con bronzine autolubrificanti
e autoallineanti a richiesta
con cuscinetti a sfera.

Ventole assiali

Le ventole assiali a 5 pale
in alluminio sono state studiate
con forma e inclinazione tali
da fornire un buon rendimento
aeraulico. Sono disponibili nei
diametri da 154 a 300 mm
con inclinazioni comprese tra
19° e 34° sia nella versione
aspirante che premente.

La gamma delle ventole è
stata ampliata con una serie
in materiale termoplastico,
il cui obiettivo peculiare è di
ridurre la rumorosità. Queste
ventole sono disponibili nei
diametri e nelle inclinazioni più
comunemente utilizzate.

Accessori

A integrazione dei motori
serie N è disponibile una vasta
gamma di accessori che
vanno dagli anelli, alle griglie,
ai supporti, per finire con i cavi
con connettore.

Imballo

I motori sono imballati in
scatole di cartone, impilati in
pallet e protetti da una
pellicola di termoretraibile.

Omologazioni

Tutti i prodotti sono sviluppati,
progettati e costruiti in
conformità alla Direttiva Bassa
Tensione 73/23/CEE, alla
Direttiva EMC 89/336/CEE, alla
Direttiva macchine 89/392/CEE
e seguendo la normativa
standard CENELEC EN60335-1.
I motori qui presentati sono
approvati VDE, UL, CSA,
GOST, CCC, e sono provvisti
dei marchi a fianco riportati.

Insulation class

B

Protection class

Up to IP44.

Locked rotor protection

impedance or thermal
protector.

Shaft support

self-lubricating and
self-aligning sleeve bearings;
ball bearings on request.

Axial fan blades

The 5-bladed aluminium range
shape and inclinations have
been studied to optimise the
airflow. The range of diameters
available is from 154 mm up to
300 mm, with pitches varying
from 19° to 34°; this is valid
both for the sucking and the
blowing version.

The fan blades range has
been increased by designing
a new thermoplastic series
whose main target is the
reduction of the noise level.

These plastic fan blades are
available in the most popular
diameters and pitches.

Accessories

A wide range of accessories
is available: rings, grids,
brackets and cables complete
of connectors.

Packaging

Motors are packed
in carton boxes, piled into
pallets and shrink-wrapped.

Certifications

All the products are developed,
designed and manufactured in
compliance with the low tension
directive 73/23/EEC, with the
EMC directive 89/336/EEC,
with the machinery directive
89/392/EEC and in accordance
with the EN 60335-1 CENELEC
standards.

The motors illustrated here are
VDE, UL, CSA, GOST, CCC,
recognised and are supplied
with the attached marks
impressed.



MOTORI N FISSAGGI

I motori della serie N sono stati sviluppati per essere fissati attraverso diverse soluzioni riassunte in questa tabella: utilizzando le viti sporgenti per il montaggio con anello o rete, i fori filettati sul coperchio posteriore o ancora i piedini per montaggio con supporto 26 mm o 18 mm. Ogni versione sarà illustrata nel dettaglio nelle pagine successive.

N MOTORS FIXING

The motors of the N series have been designed to be fixed through different solutions that are shown in the following table: motors can be fixed by using the protruding screws for ring or grid, by the 3 threaded holes on back shield, or using the bottom screws for bracket mounting.

Coperchi in alluminio - Aluminium end-shields

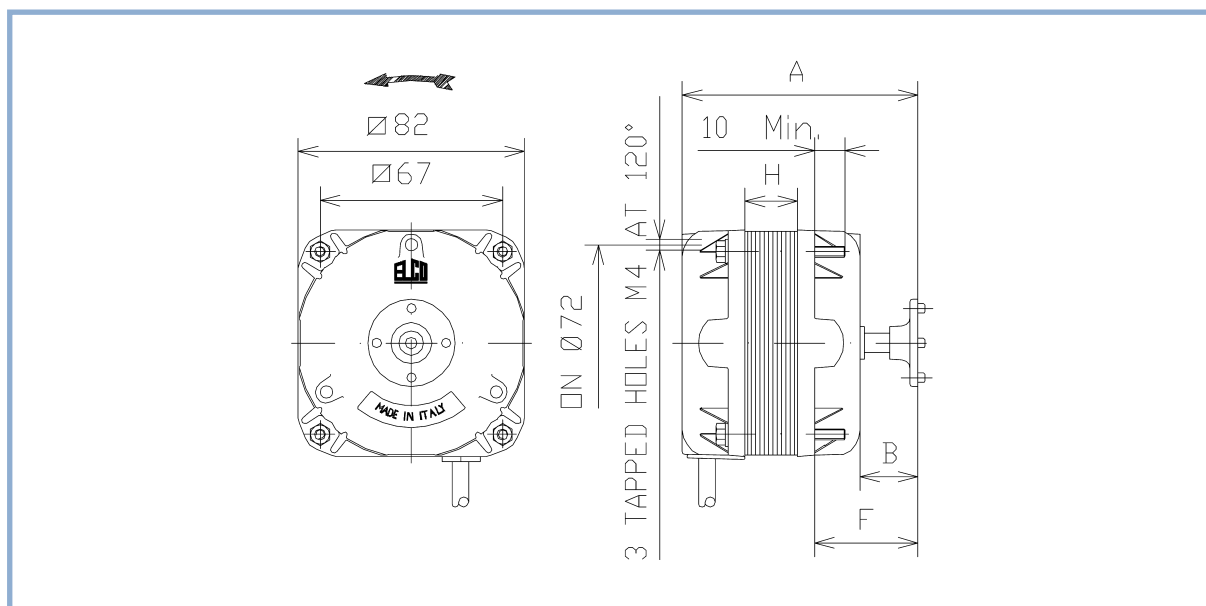
| | T1 Pag. 7 | T2 Pag. 8 | T3 Pag. 9 | T4 Pag. 10 | T5 Pag. 11 |
|--|----------------------|----------------------|--------------------------|--------------------------|----------------------|
| M4 viti anteriori x 10/12 M4 x 10/12 screws front Drive End | ● | ● | ● | ● | ● |
| 3xM4 posteriori interasse Ø 72 3xM4 holes on 72 PCD non Drive End | ● | | | ● | ● |
| 3xM4 anteriori interasse Ø 72 3xM4 holes on 72 PCD Drive End | | | | | ● |
| 2xM4 posteriori 180° 2xM4 holes at 180° | | | | | |
| Piede 26 mm 2xM4 screws stud mounting, 26 mm spaced | | | ● | ● | ● |
| Piede 18 mm 2xM4 screws stud mounting, 18 mm spaced | | | A RICHIESTA ON DEMAND | A RICHIESTA ON DEMAND | ● |
| Piede posteriore USA USA support | | | | | |
| | T1 Pag. 12 | T2 Pag. 13 | T3 Pag. 14 | T4 Pag. 15 | |
| Connessione Plug-in Plug-in connection | ● | ● | ● | ● | |

MOTORI N T1

- Due differenti
tipi di fissaggio possibili:
- 3 fori filettati M4
a 120° su Ø 72 mm
sul coperchio posteriore
 - viti sporgenti M4 lato uscita
albero per anello/rete.

N MOTORS T1

- Two different
types of fixation:
- 3 x M4 tapped holes
on 72mm PCD at 120°
 - M4 protruding screws
Drive End for ring/grid.



Prestazioni - Performances

| Codice Part Number | Volt | W Out | W In | Amp | RPM | Cavo-Cable mm | Imballo Packing |
|-----------------------|------|-------|------|------|-----------|------------------|--------------------|
| NET1T05ZVN001 | 230 | 5 | 32 | 0,20 | 1300/1550 | 500 | 20 Pcs |
| NET1T10ZVN002 | 230 | 10 | 38 | 0,23 | 1300/1550 | 500 | 20 Pcs |
| NET1T16PVN001 | 230 | 16 | 65 | 0,45 | 1300/1550 | 500 | 15 Pcs |
| NET1T25PVN001 | 230 | 25 | 95 | 0,68 | 1300/1550 | 500 | 10 Pcs |
| NET1T34PVN001 | 230 | 34 | 120 | 0,87 | 1300/1550 | 500 | 10 Pcs |

Dimensioni - Dimensions

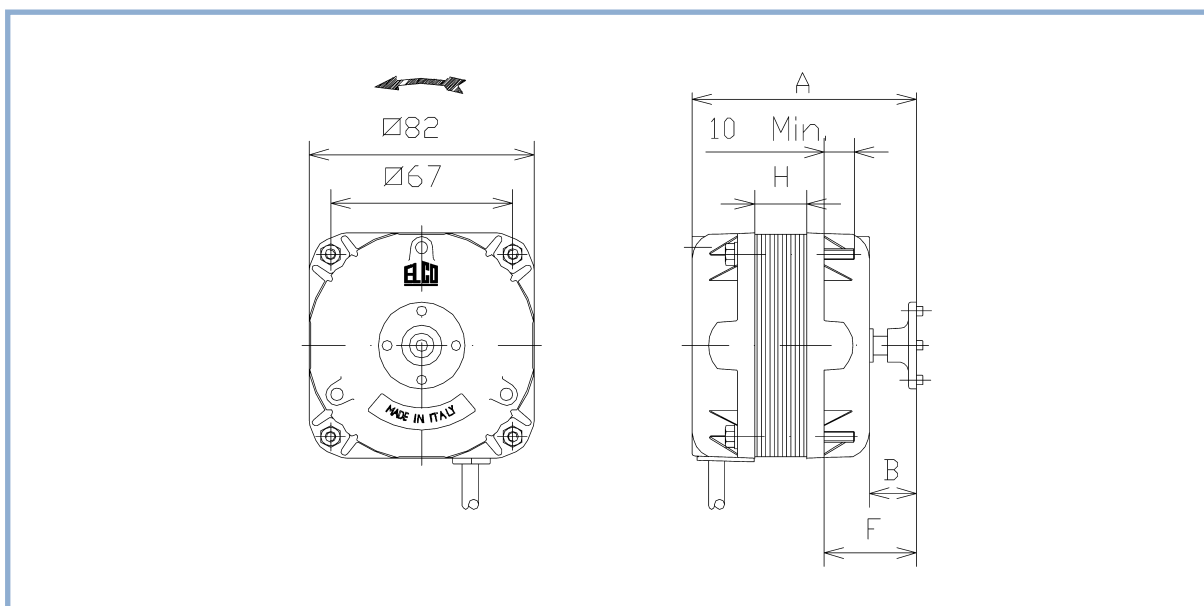
| Codice Part Number | H | A | B | C | D | E | F |
|-----------------------|----|-----|----|---|---|---|----|
| NET1T05ZVN001 | 13 | 80 | 21 | - | - | - | 38 |
| NET1T10ZVN002 | 20 | 87 | 22 | - | - | - | 38 |
| NET1T16PVN001 | 25 | 92 | 21 | - | - | - | 38 |
| NET1T25PVN001 | 40 | 107 | 21 | - | - | - | 37 |
| NET1T34PVN001 | 45 | 119 | 28 | - | - | - | 45 |

MOTORI N T2

N MOTORS T2

- Un tipo di fissaggio possibile:
- viti sporgenti M4 lato uscita albero per anello/rete.

- One type of fixation:
- M4 protruding screws Drive End for ring/grid.



Prestazioni - Performances

| Codice Part Number | Volt | W Out | W In | Amp | RPM | Cavo-Cable mm | Imballo Packing |
|-----------------------|------|-------|------|------|-----------|------------------|--------------------|
| NET2T05ZVN001 | 230 | 5 | 32 | 0,20 | 1300/1550 | 500 | 20 Pcs |
| NET2T10ZVN002 | 230 | 10 | 38 | 0,23 | 1300/1550 | 500 | 20 Pcs |
| NET2T16PVN001 | 230 | 16 | 65 | 0,45 | 1300/1550 | 500 | 15 Pcs |
| NET2T25PVN001 | 230 | 25 | 95 | 0,68 | 1300/1550 | 500 | 10 Pcs |
| NET2T34PVN002 | 230 | 34 | 120 | 0,87 | 1300/1550 | 500 | 10 Pcs |

Dimensioni - Dimensions

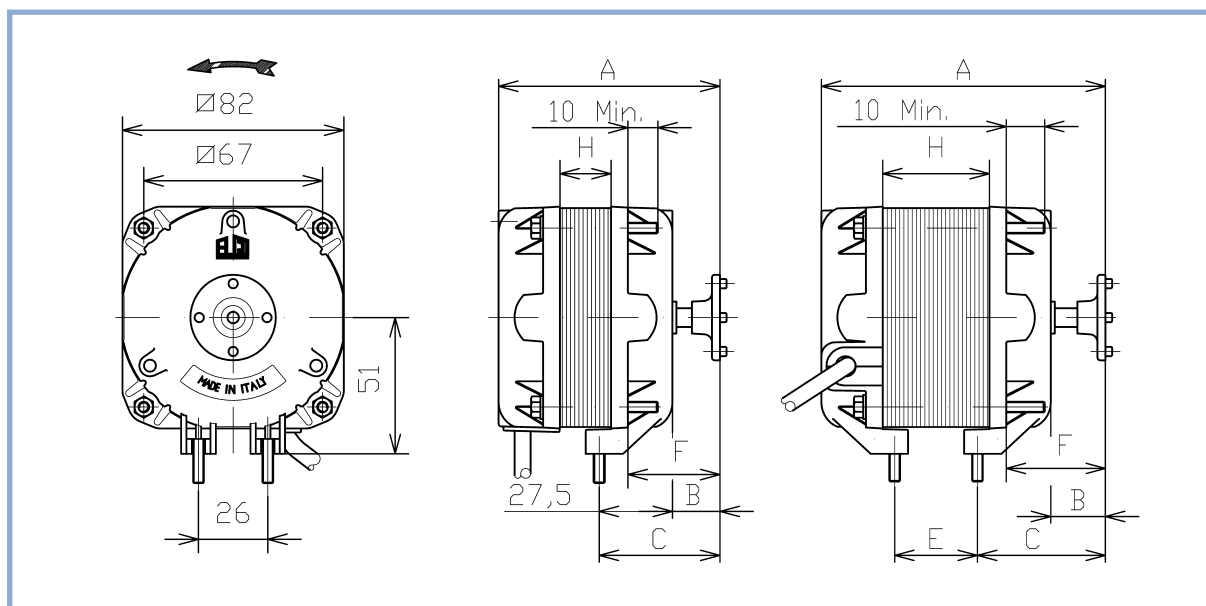
| Codice Part Number | H | A | B | C | D | E | F |
|-----------------------|----|-----|----|---|---|---|----|
| NET2T05ZVN001 | 13 | 76 | 17 | - | - | - | 34 |
| NET2T10ZVN002 | 20 | 83 | 18 | - | - | - | 34 |
| NET2T16PVN001 | 25 | 87 | 16 | - | - | - | 33 |
| NET2T25PVN001 | 40 | 107 | 21 | - | - | - | 37 |
| NET2T34PVN002 | 45 | 119 | 28 | - | - | - | 40 |

MOTORI N T3

- Due differenti
tipi di fissaggio possibili:
- viti sporgenti M4 lato uscita
albero per anello/rete
sul coperchio posteriore
 - 2 viti M4 in basso
per fissaggio con staffa.

N MOTORS T3

- Two different
types of fixation:
- M4 protruding screws
Drive End for ring/grid
 - 2 x M4 bottom screws
for stud mounting.



Prestazioni - Performances

| Codice Part Number | Volt | W Out | W In | Amp | RPM | Cavo-Cable mm | Imballo Packing |
|-----------------------|------|-------|------|------|-----------|------------------|--------------------|
| NET3T05ZVN004 | 230 | 5 | 32 | 0,20 | 1300/1550 | 500 | 20 Pcs |
| NET3T10ZVN001 | 230 | 10 | 38 | 0,23 | 1300/1550 | 500 | 20 Pcs |
| NET3T16PVN001 | 230 | 16 | 65 | 0,45 | 1300/1550 | 500 | 15 Pcs |
| NET3T25PVN004 | 230 | 25 | 95 | 0,68 | 1300/1550 | 500 | 10 Pcs |
| NET3T34PVN002 | 230 | 34 | 120 | 0,87 | 1300/1550 | 1000 | 10 Pcs |

Dimensioni - Dimensions

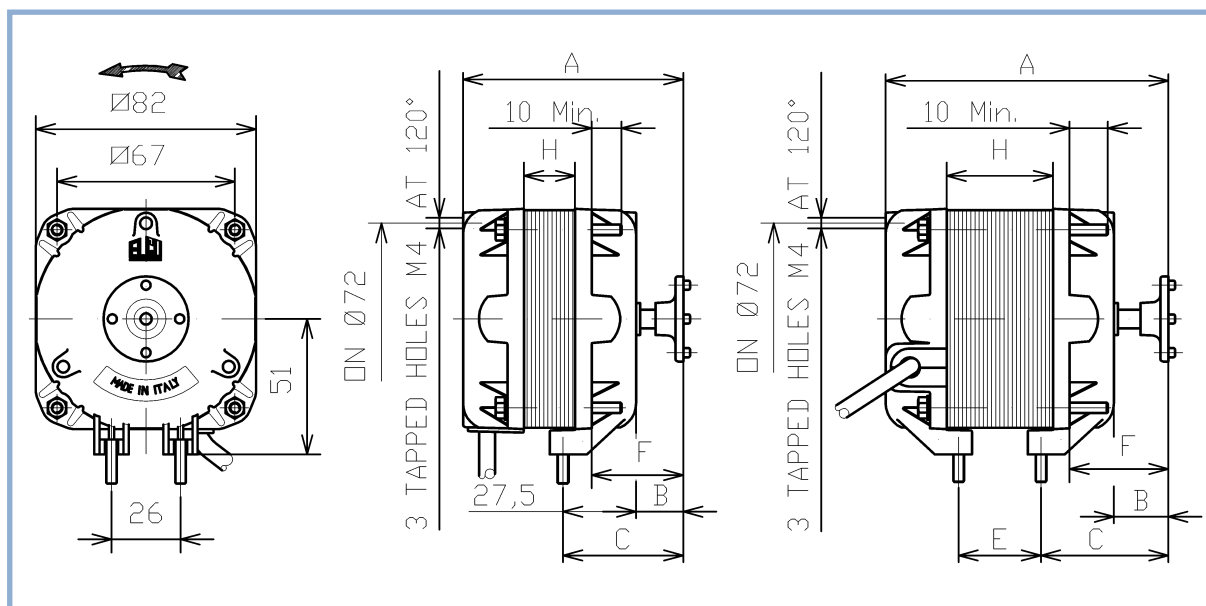
| Codice Part Number | H | A | B | C | D | E | F |
|-----------------------|----|-----|----|----|---|----|----|
| NET3T05ZVN004 | 13 | 76 | 17 | 44 | - | - | 34 |
| NET3T10ZVN001 | 20 | 83 | 18 | 45 | - | - | 34 |
| NET3T16PVN001 | 25 | 87 | 16 | 43 | - | - | 33 |
| NET3T25PVN004 | 40 | 102 | 16 | 43 | - | 31 | 32 |
| NET3T34PVN002 | 45 | 119 | 28 | 56 | - | 36 | 45 |

MOTORI N T4

- Tre differenti tipi di fissaggio possibili:
- 3 fori filettati M4 a 120° su Ø72 mm sul coperchio posteriore
 - viti sporgenti M4 lato uscita albero per anello/rete
 - 2 viti M4 in basso per fissaggio con staffa.

N MOTORS T4

- Three different types of fixation:
- 3 x M4 tapped holes on 72 mm PCD at 120°
 - M4 protruding screws Drive End for ring/grid
 - 2 x M4 bottom screws for stud mounting.



Prestazioni - Performances

| Codice Part Number | Volt | W Out | W In | Amp | RPM | Cavo-Cable mm | Imballo Packing |
|----------------------|------|-------|------|------|-----------|---------------|-----------------|
| NET4T05ZVN001 | 230 | 5 | 32 | 0,20 | 1300/1550 | 500 | 20 Pcs |
| NET4T10ZVN001 | 230 | 10 | 38 | 0,23 | 1300/1550 | 500 | 20 Pcs |
| NET4T16PVN001 | 230 | 16 | 65 | 0,45 | 1300/1550 | 500 | 15 Pcs |
| NET4T25PVN001 | 230 | 25 | 95 | 0,68 | 1300/1550 | 500 | 10 Pcs |
| NET4T34PVN001 | 230 | 34 | 120 | 0,87 | 1300/1550 | 500 | 10 Pcs |

Dimensioni - Dimensions

| Codice Part Number | H | A | B | C | D | E | F |
|----------------------|----|-----|----|----|---|----|----|
| NET4T05ZVN001 | 13 | 80 | 21 | 48 | - | - | 38 |
| NET4T10ZVN001 | 20 | 87 | 22 | 49 | - | - | 38 |
| NET4T16PVN001 | 25 | 92 | 21 | 48 | - | - | 38 |
| NET4T25PVN001 | 40 | 112 | 26 | 53 | - | 31 | 42 |
| NET4T34PVN001 | 45 | 119 | 28 | 56 | - | 36 | 45 |

MOTORI N T5

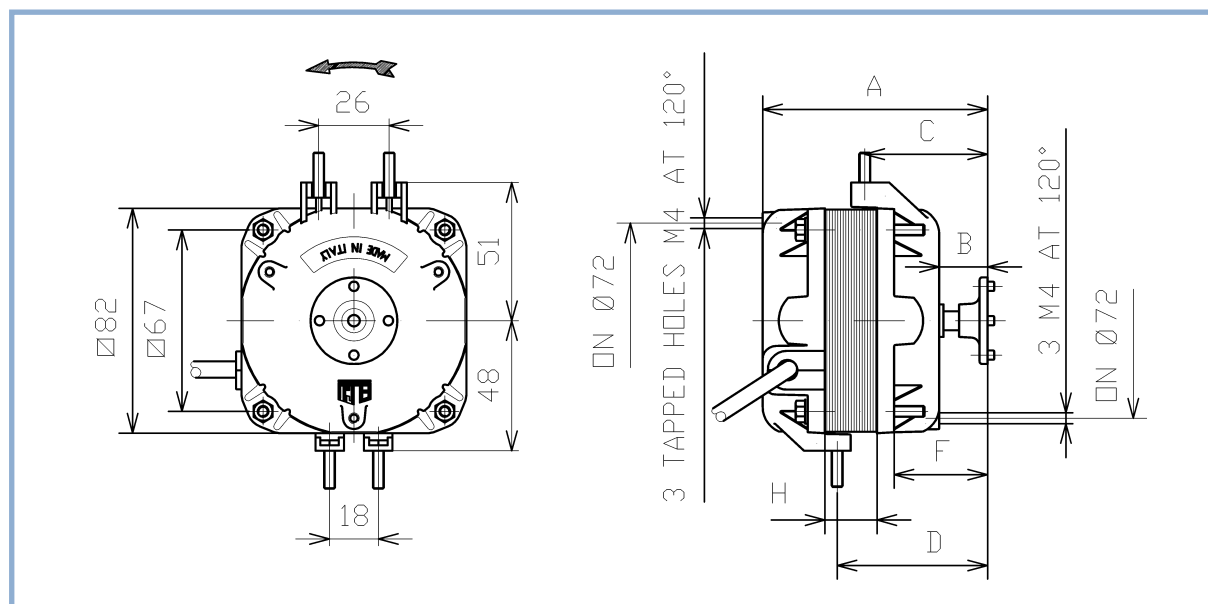
N MOTORS T5

Motore universale con cinque differenti tipi di fissaggio possibili:

- 3 fori filettati M4 a 120° su Ø 72 mm sul coperchio posteriore
- 3 fori filettati M4 a 120° su Ø 72 mm sul coperchio anteriore
- viti sporgenti M4 lato uscita albero per anello/rete
- 2 viti M4 in basso per fissaggio con staffa, interasse 26 mm
- 2 viti M4 in basso per fissaggio con staffa, interasse 18 mm.

Universal motor with five different types of fixation:

- 3 x M4 tapped holes on 72 mm PCD at 120°, non Drive End
- 3 x M4 tapped holes on 72 mm PCD at 120°, Drive End
- M4 protruding screws Drive End for ring/grid
- 2 x M4 bottom screws for stud mounting, 26 mm spaced
- 2 x M4 bottom screws for stud mounting, 18 mm spaced.



Prestazioni - Performances

| Codice Part Number | Volt | W Out | W In | Amp | RPM | Cavo-Cable mm | Imballo Packing |
|-----------------------|------|-------|------|------|-----------|------------------|--------------------|
| NET5T05ZVN001 | 230 | 5 | 32 | 0,20 | 1300/1550 | 500 | 20 Pcs |
| NET5T10ZVN001 | 230 | 10 | 38 | 0,23 | 1300/1550 | 500 | 20 Pcs |
| NET5T16PVN001 | 230 | 16 | 65 | 0,45 | 1300/1550 | 500 | 15 Pcs |
| NET5T25PVN001 | 230 | 25 | 95 | 0,68 | 1300/1550 | 500 | 10 Pcs |
| NET5T34PVN001 | 230 | 34 | 120 | 0,87 | 1300/1550 | 500 | 10 Pcs |

Dimensioni - Dimensions

| Codice Part Number | H | A | B | C | D | E | F |
|-----------------------|----|-----|----|----|----|---|----|
| NET5T05ZVN001 | 13 | 80 | 21 | 48 | 52 | - | 38 |
| NET5T10ZVN001 | 20 | 87 | 22 | 49 | 59 | - | 38 |
| NET5T16PVN001 | 25 | 92 | 21 | 48 | 64 | - | 38 |
| NET5T25PVN001 | 40 | 112 | 26 | 53 | 84 | - | 42 |
| NET5T34PVN001 | 45 | 119 | 28 | 56 | 92 | - | 45 |

MOTORI N T1 PLUG-IN

N MOTORS T1 PLUG-IN

Motore con connettore speciale
(Brevetto Elco Nr. 0765024)
per collegamento mobile a cavo
di alimentazione.

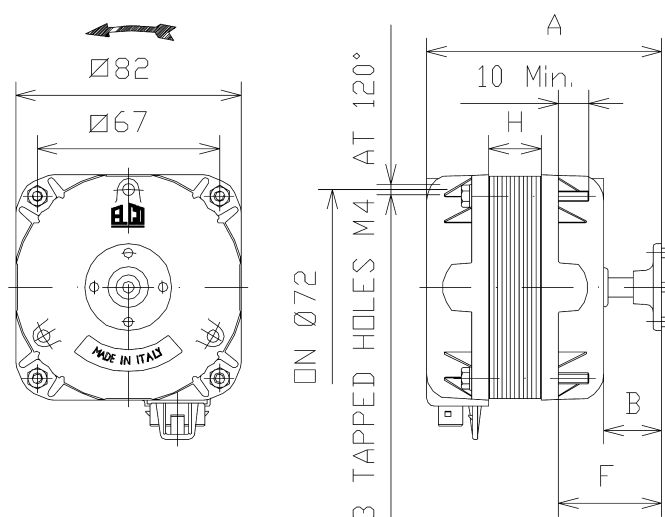
Due differenti tipi di fissaggio
possibili:

- 3 fori filettati M4 a 120° su
Ø 72 mm sul coperchio posteriore
- viti sporgenti M4 lato uscita albero
per anello/rete.

Motor with special flat pin terminal
(Elco Patent No. 0765024)
for connection to the supply cable.

Two different types of fixation:

- 3 x M4 tapped holes on
72 mm PCD at 120°
- M4 protruding screws
Drive End for ring/grid.



Prestazioni - Performances

| Codice Part Number | Volt | W Out | W In | Amp | RPM | Cavo-Cable mm | Imballo Packing |
|-----------------------|------|-------|------|------|-----------|------------------|--------------------|
| NET1C05ZVN001 | 230 | 5 | 32 | 0,20 | 1300/1550 | - | 20 Pcs |
| NET1C10ZVN001 | 230 | 10 | 38 | 0,23 | 1300/1550 | - | 20 Pcs |
| NET1C16PVN001 | 230 | 16 | 65 | 0,45 | 1300/1550 | - | 15 Pcs |
| NET1C25PVN001 | 230 | 25 | 95 | 0,68 | 1300/1550 | - | 10 Pcs |
| NET1C34PVN001 | 230 | 34 | 120 | 0,87 | 1300/1550 | - | 10 Pcs |

Dimensioni - Dimensions

| Codice Part Number | H | A | B | C | D | E | F |
|-----------------------|----|-----|----|---|---|---|----|
| NET1C05ZVN001 | 13 | 80 | 21 | - | - | - | 38 |
| NET1C10ZVN001 | 20 | 87 | 22 | - | - | - | 38 |
| NET1C16PVN001 | 25 | 92 | 21 | - | - | - | 38 |
| NET1C25PVN001 | 40 | 107 | 21 | - | - | - | 37 |
| NET1C34PVN001 | 45 | 119 | 28 | - | - | - | 45 |

MOTORI N T2_{PLUG-IN}

N MOTORS T2_{PLUG-IN}

Motore con connettore speciale
(Brevetto Elco Nr. 0765024)
per collegamento mobile a cavo
di alimentazione.

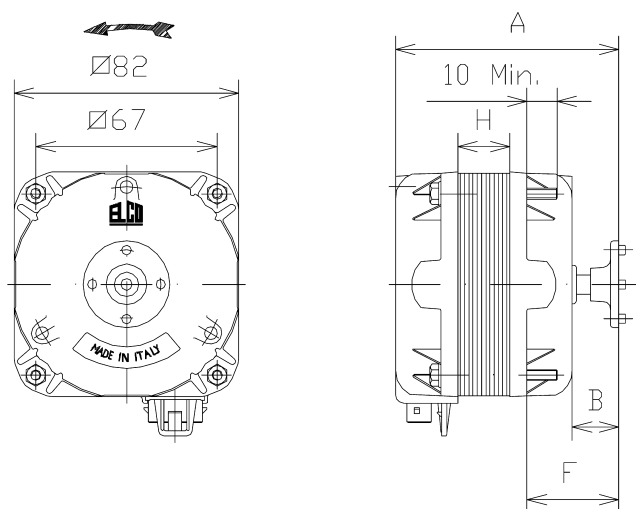
Un tipo di fissaggio possibile:

- viti sporgenti M4 lato uscita
albero per anello/rete.

Motor with special flat pin terminal
(Elco Patent No. 0765024)
for connection to the supply cable.

One type of fixation:

- M4 protruding screws
Drive End for ring/grid.



Prestazioni - Performances

| Codice Part Number | Volt | W Out | W In | Amp | RPM | Cavo-Cable mm | Imballo Packing |
|-----------------------|------|-------|------|------|-----------|------------------|--------------------|
| NET2C05ZVN001 | 230 | 5 | 32 | 0,20 | 1300/1550 | - | 20 Pcs |
| NET2C10ZVN001 | 230 | 10 | 38 | 0,23 | 1300/1550 | - | 20 Pcs |
| NET2C16PVN001 | 230 | 16 | 65 | 0,45 | 1300/1550 | - | 15 Pcs |
| NET2C25PVN001 | 230 | 25 | 95 | 0,68 | 1300/1550 | - | 10 Pcs |
| NET2C34PVN001 | 230 | 34 | 120 | 0,87 | 1300/1550 | - | 10 Pcs |

Dimensioni - Dimensions

| Codice Part Number | H | A | B | C | D | E | F |
|-----------------------|----|-----|----|---|---|---|----|
| NET2C05ZVN001 | 13 | 76 | 17 | - | - | - | 34 |
| NET2C10ZVN001 | 20 | 83 | 18 | - | - | - | 34 |
| NET2C16PVN001 | 25 | 87 | 16 | - | - | - | 33 |
| NET2C25PVN001 | 40 | 107 | 21 | - | - | - | 37 |
| NET2C34PVN001 | 45 | 114 | 23 | - | - | - | 40 |

MOTORI N T3 PLUG-IN

N MOTORS T3 PLUG-IN

Motore con connettore speciale
(Brevetto Elco Nr. 0765024)
per collegamento mobile a cavo
di alimentazione.

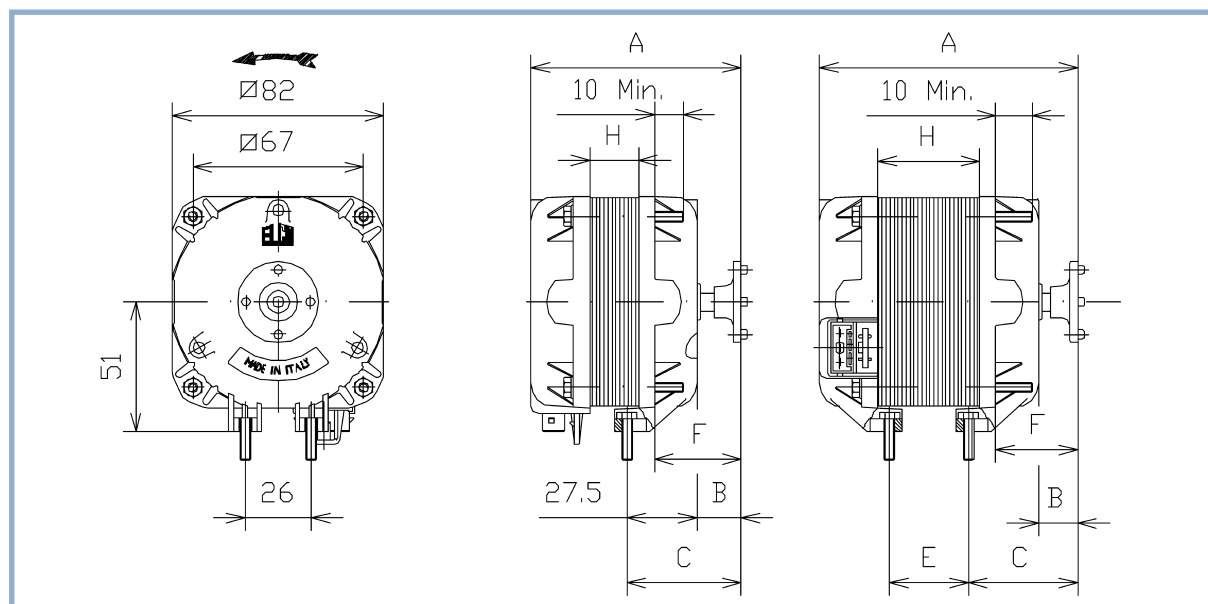
Due differenti tipi di fissaggio
possibili:

- viti sporgenti M4 lato uscita albero
per anello/rete
- 2 viti M4 in basso per fissaggio
con staffa.

Motor with special flat pin terminal
(Elco Patent No. 0765024)
for connection to the supply cable.

Two different types of fixation:

- M4 protruding screws
Drive End for ring/grid
- 2 x M4 bottom screws for
stud mounting.



Prestazioni - Performances

| Codice Part Number | Volt | W Out | W In | Amp | RPM | Cavo-Cable mm | Imballo Packing |
|-----------------------|------|-------|------|------|-----------|------------------|--------------------|
| NET3C05ZVN001 | 230 | 5 | 32 | 0,20 | 1300/1550 | - | 20 Pcs |
| NET3C10ZVN001 | 230 | 10 | 38 | 0,23 | 1300/1550 | - | 20 Pcs |
| NET3C16PVN001 | 230 | 16 | 65 | 0,45 | 1300/1550 | - | 15 Pcs |
| NET3C25PVN002 | 230 | 25 | 95 | 0,68 | 1300/1550 | - | 10 Pcs |
| NET3C34PVN001 | 230 | 34 | 120 | 0,87 | 1300/1550 | - | 10 Pcs |

Dimensioni - Dimensions

| Codice Part Number | H | A | B | C | D | E | F |
|-----------------------|----|-----|----|----|---|----|----|
| NET3C05ZVN001 | 13 | 76 | 17 | 44 | - | - | 34 |
| NET3C10ZVN001 | 20 | 83 | 18 | 45 | - | - | 34 |
| NET3C16PVN001 | 25 | 87 | 16 | 43 | - | - | 33 |
| NET3C25PVN002 | 40 | 102 | 16 | 43 | - | 31 | 32 |
| NET3C34PVN001 | 45 | 119 | 28 | 56 | - | 36 | 45 |

MOTORI N T4_{PLUG-IN}

Motore con connettore speciale
(Brevetto Elco Nr. 0765024)
per collegamento mobile a cavo
di alimentazione.

Tre differenti tipi di fissaggio
possibili:

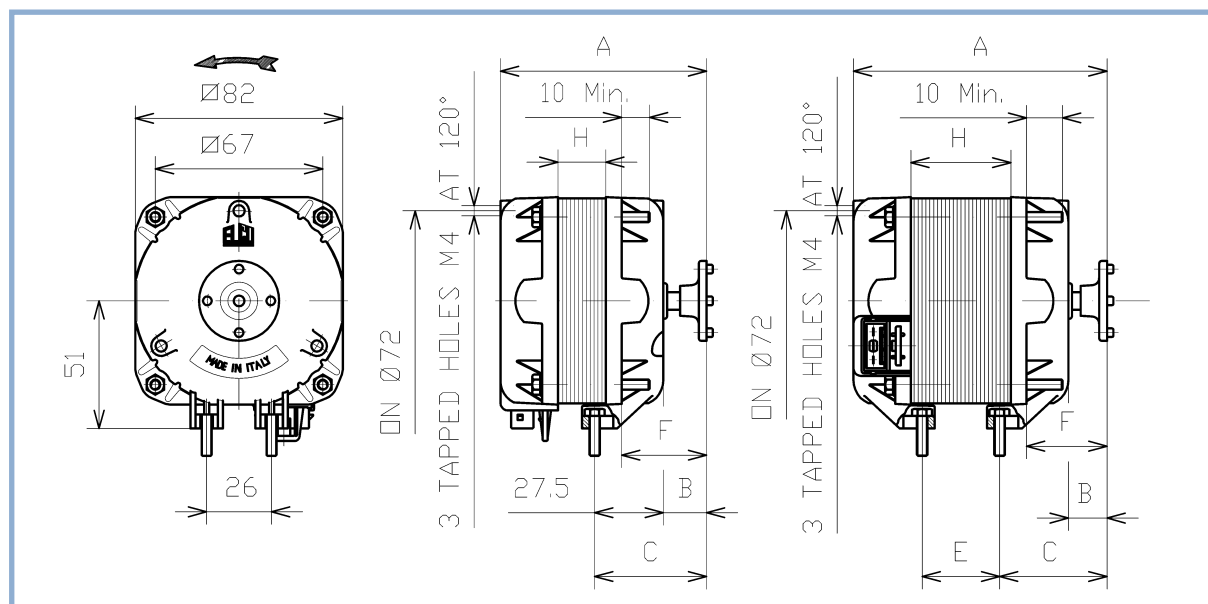
- 3 fori filettati M4 a 120° su Ø 72 mm sul coperchio posteriore
- viti sporgenti M4 lato uscita albero per anello/rete
- 2 viti M4 in basso per fissaggio con staffa.

N MOTORS T4_{PLUG-IN}

Motor with special flat pin terminal
(Elco Patent No. 0765024)
for connection to the supply cable.

Three different types
of fixation:

- 3 x M4 tapped holes on 72 mm PCD at 120°
- M4 protruding screws Drive End for ring/grid
- 2 x M4 bottom screws for stud mounting.



Prestazioni - Performances

| Codice Part Number | Volt | W Out | W In | Amp | RPM | Cavo-Cable mm | Imballo Packing |
|-----------------------|------|-------|------|------|-----------|------------------|--------------------|
| NET4C05ZVN001 | 230 | 5 | 32 | 0,20 | 1300/1550 | - | 20 Pcs |
| NET4C10ZVN001 | 230 | 10 | 38 | 0,23 | 1300/1550 | - | 20 Pcs |
| NET4C16PVN001 | 230 | 16 | 65 | 0,45 | 1300/1550 | - | 15 Pcs |
| NET4C25PVN001 | 230 | 25 | 95 | 0,68 | 1300/1550 | - | 10 Pcs |
| NET4C34PVN001 | 230 | 34 | 120 | 0,87 | 1300/1550 | - | 10 Pcs |

Dimensioni - Dimensions

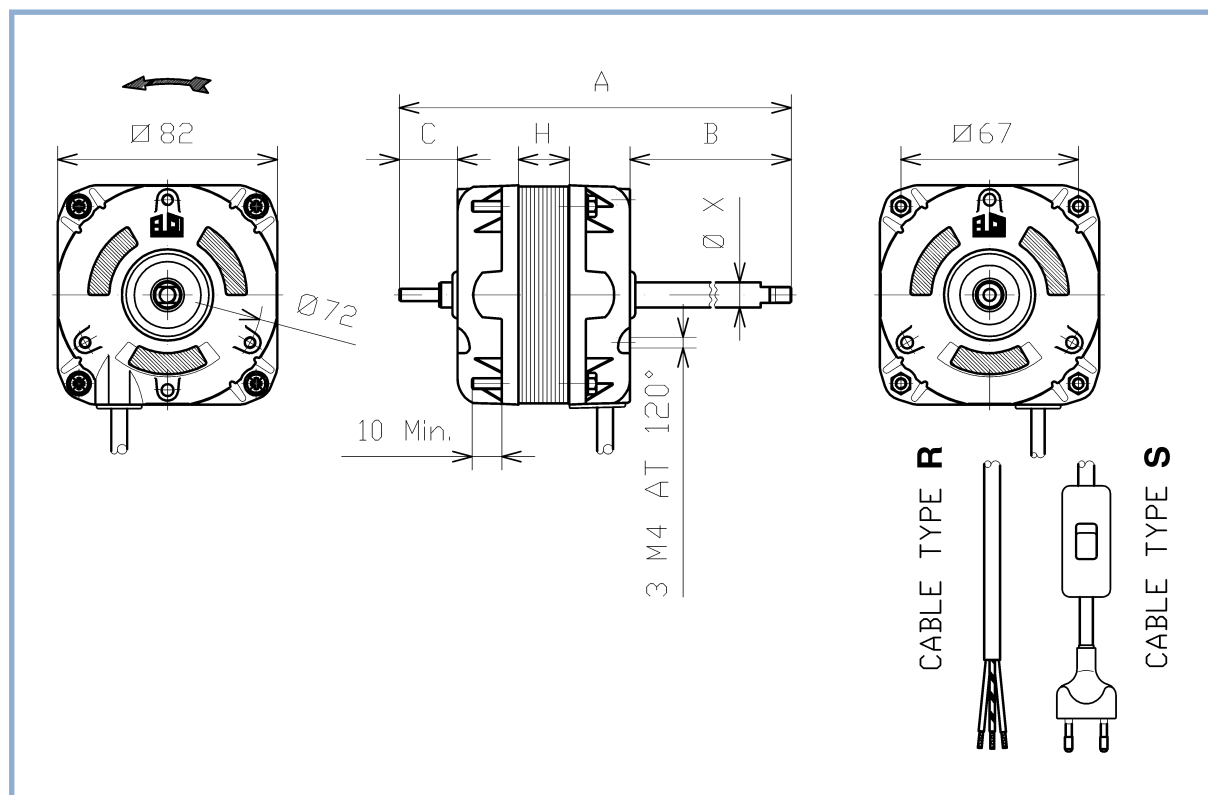
| Codice Part Number | H | A | B | C | D | E | F |
|-----------------------|----|-----|----|----|---|----|----|
| NET4C05ZVN001 | 13 | 80 | 21 | 48 | - | - | 38 |
| NET4C10ZVN001 | 20 | 87 | 22 | 49 | - | - | 38 |
| NET4C16PVN001 | 25 | 92 | 21 | 48 | - | - | 38 |
| NET4C25PVN001 | 40 | 112 | 26 | 53 | - | 31 | 42 |
| NET4C34PVN001 | 45 | 119 | 28 | 56 | - | 36 | 45 |

MOTORI N MIXER

Motori speciali con doppia sporgenza albero per collegamento ventolina agitatrice liquido e ventola di raffreddamento motore (non comprese nella fornitura).

N MOTORS MIXER

Special double shaft motors for the coupling of the mixer fan and of the cooling fan (not included).



Prestazioni e Dimensioni - Performances and Dimensions

| Codice Part Number | Volt-Hz | W Out | W In | H | A | B | C | Ø X | Cavo-Cable mm |
|-----------------------|-----------|----------|---------|----|-----|-----|----|------|------------------|
| NET7B08NNN501 | 127-60 | 8 | 43 | 20 | 275 | 188 | 22 | 9,52 | S 2040 |
| NET7B08NNN801 | 220-60 | 8 | 39 | 20 | 275 | 188 | 22 | 9,52 | S 2040 |
| NET7T07PNN201 | 230-50/60 | 7 | 30 | 30 | 334 | 251 | - | 7,00 | R 1030 |
| NET7B28NNN501 | 127-60 | 28 | 98 | 45 | 413 | 300 | 22 | 9,52 | S 2015 |
| NET7B28NNN502 | 127-60 | 28 | 98 | 45 | 363 | 250 | 22 | 9,52 | S 2015 |
| NET7B20NNN801 | 220-60 | 20 | 90 | 45 | 363 | 250 | 22 | 9,52 | S 2015 |
| NET7B20NNN802 | 220-60 | 20 | 90 | 45 | 413 | 300 | 22 | 9,52 | S 2015 |
| NET7B20NNN803 | 220-60 | 20 | 90 | 45 | 453 | 340 | 22 | 9,52 | S 2015 |

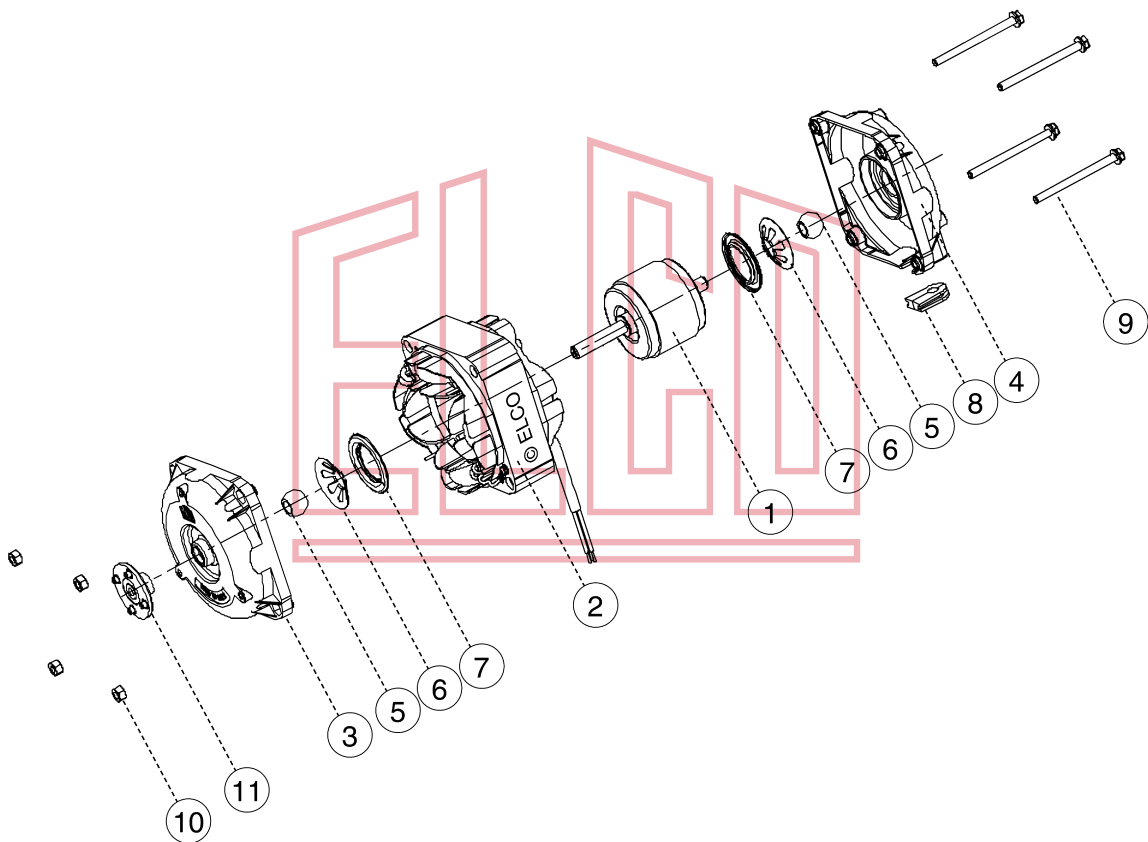
MOTORI N COMPONENTI BASE

- 1 Gruppo indotto
- 2 Gruppo statore
- 3 Coperchio anteriore
- 4 Coperchio posteriore
- 5 Bronzina
- 6 Contenitore
- 7 Coperchietto
- 8 Passacavo
- 9 Vite
- 10 Dado
- 11 Portaventola

N MOTORS



MAIN COMPONENTS

- 1 Rotor shaft assembly
- 2 Stator
- 3 Drive end-shield
- 4 Non drive end-shield
- 5 Sleeve bearing
- 6 Washer
- 7 Cover
- 8 Cable gland
- 9 Screw
- 10 Nut
- 11 Blade holder



ETICHETTA

LABEL

| | | |
|--|---|---|
| Sigla motore Motor description | Settimana - anno di produzione Week - year of production | Omologazioni Certifications |
| VN 10-20 /303 230/240V ~ 50/60Hz 10/38W 0,23A CL.B PROT.IMP. 1300/1550RPM | 12-02 |  REG.-Nr. xxxx  14537565 NET1T10ZVN004 |
| Dati elettrici Rated data | Codice prodotto Product part number | Codice cliente (facoltativo) Customer part number (optional) |

**Etichetta identificativa
prodotto originale**

**Original product
identification label**



VENTOLE

FAN BLADES

La gamma di ventole assiali a 5 pale comprende le versioni in alluminio (aspiranti e prementi) nei Ø 154, 172, 200, 230, 254, 275, 300 con inclinazioni comprese tra 19° e 34°, e in materiale termoplastico (solo aspiranti) nei Ø 154, 172, 200, 230, 254 e con inclinazioni definite.

The range of 5 bladed axial fans includes aluminium models, sucking and blowing, in the following diameters Ø 154, 172, 200, 230, 254, 275, 300, pitches available from 19° up to 34° and thermoplastic models, sucking only, Ø 154, 172, 200, 230, 254 and specific pitches are available.



VENTOLE

FAN BLADES

In questa tabella sono indicati i limiti per l'accoppiamento ottimale fra motori e ventole.

N.B.:
Per ogni diametro di ventola è indicata l'inclinazione massima sopportabile dal motore, per non superare i limiti di temperatura imposti dalla classe di isolamento "B" ad un valore di prevalenza di 2 mmH₂O.

In this table you have the limits for the motor / fan blade couplings.

P.D.:
For each fan blade diameter the maximum motor inclination is indicated, not to exceed the temperature limits imposed by "B" insulation class to a 2 mmH₂O value.

Ventole in plastica - Limite di accoppiamento motore/ventola Plastic fan blades - Motor/fan coupling limits

| Motore Motor | VN 5-13 | | VN 10-20 | | VNT 16-25 | | VNT 25-40 | | VNT 34-45 | | Ø Ventola Fan blade |
|------------------|---------|----|----------|----|-----------|----|-----------|----|-----------|----|------------------------|
| Freq. Hz | 50 | 60 | 50 | 60 | 50 | 60 | 50 | 60 | 50 | 60 | |
| α (°) max | 28 | 28 | | | | | | | | | 154 |
| | 31 | 31 | | | | | | | | | 172 |
| | 34 | 34 | 34 | 34 | | | | | | | 200 |
| | | | 31 | 31 | 31 | 31 | | | | | 230 |
| | | | | | 28 | 28 | 28 | 28 | | | 254 |

Ventole in alluminio - Limite di accoppiamento motore/ventola Aluminium fan blades - Motor/fan coupling limits

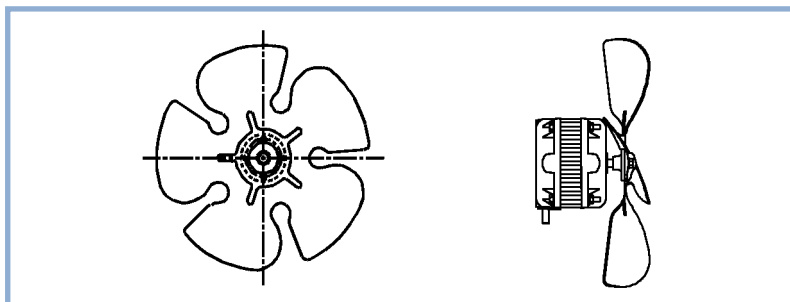
| Motore Motor | VN 5-13 | | VN 10-20 | | VNT 16-25 | | VNT 25-40 | | VNT 34-45 | | Ø Ventola Fan blade |
|------------------|---------|----|----------|----|-----------|----|-----------|----|-----------|----|------------------------|
| Freq. Hz | 50 | 60 | 50 | 60 | 50 | 60 | 50 | 60 | 50 | 60 | |
| α (°) max | 34 | 34 | | | | | | | | | 154 |
| | 34 | 34 | 34 | 34 | | | | | | | 172 |
| | 34 | 34 | 34 | 34 | | | | | | | 200 |
| | 25 | 22 | 34 | 28 | 34 | 34 | | | | | 230 |
| | | | 28 | 22 | 34 | 28 | 34 | 34 | | | 254 |
| | | | | | 25 | 22 | 31 | 31 | 34 | 28 | 300 |

CURVE DI PORTATA MOTORE CON VENTOLA IN PLASTICA

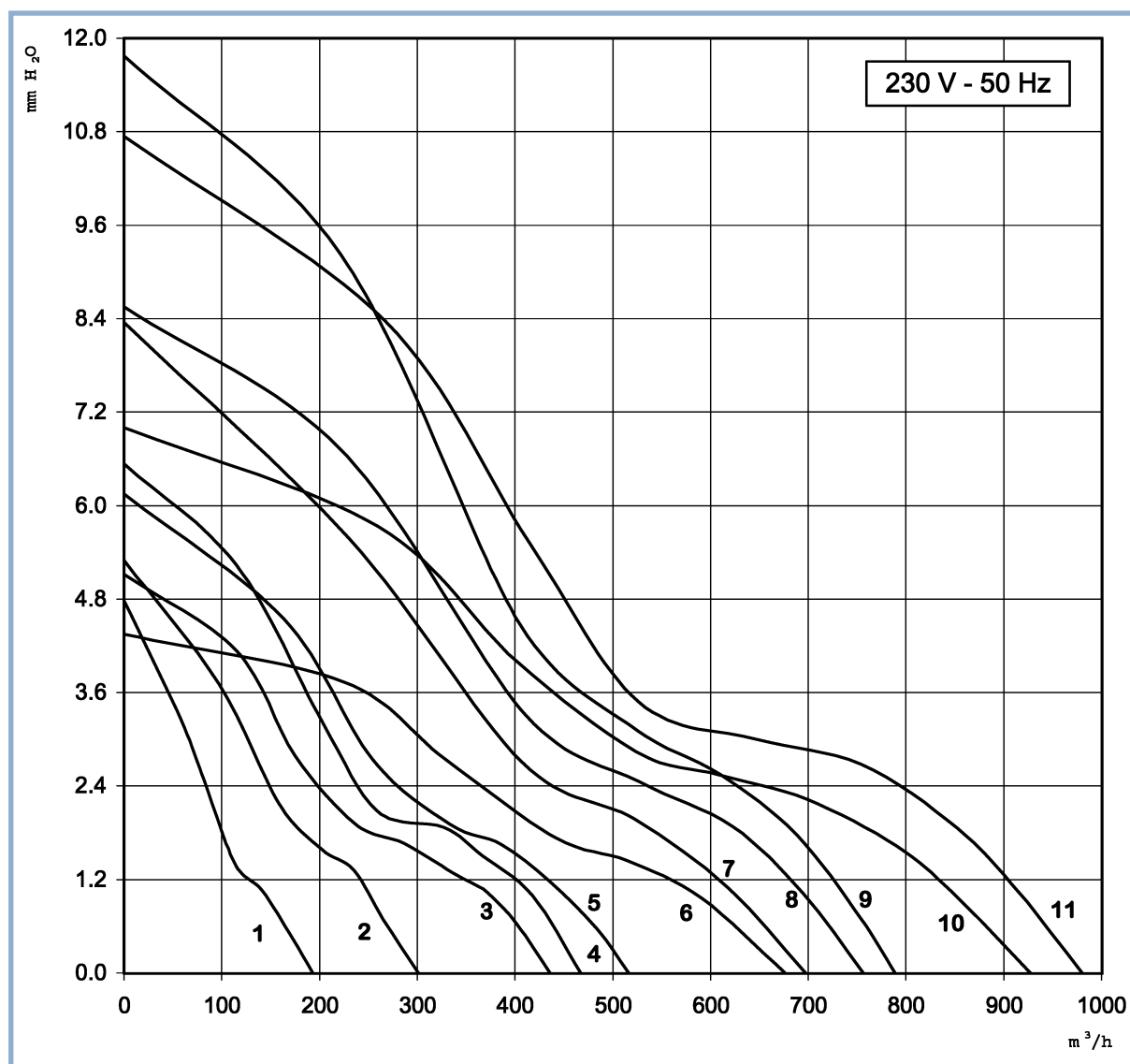
AIR FLOW PERFORMANCE MOTOR WITH PLASTIC FAN BLADE

Le curve sotto riportate indicano le prestazioni aerauliche per i più comuni accoppiamenti motore/ventola in plastica.

The under-drawn curves show the airflow performance for the most common motor/plastic blade couplings.



- 1** = VN 5-13 + Ø 154x28°
- 2** = VN 5-13 + Ø 172x31°
- 3** = VN 5-13 + Ø 200x28°
- 4** = VN 10-20 + Ø 200x28°
- 5** = VN 10-20 + Ø 200x34°
- 6** = VN 10-20 + Ø 230x31°
- 7** = VNT 16-25 + Ø 230x31°
- 8** = VNT 16-25 + Ø 254x22°
- 9** = VNT 25-40 + Ø 254x22°
- 10** = VNT 16-25 + Ø 254x28°
- 11** = VNT 25-40 + Ø 254x28°

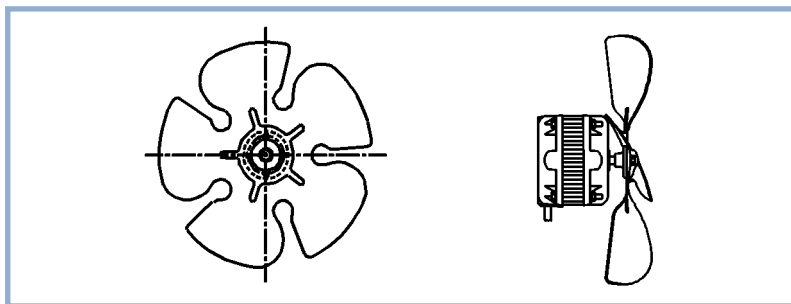


CURVE DI PORTATA MOTORE CON VENTOLA IN ALLUMINIO

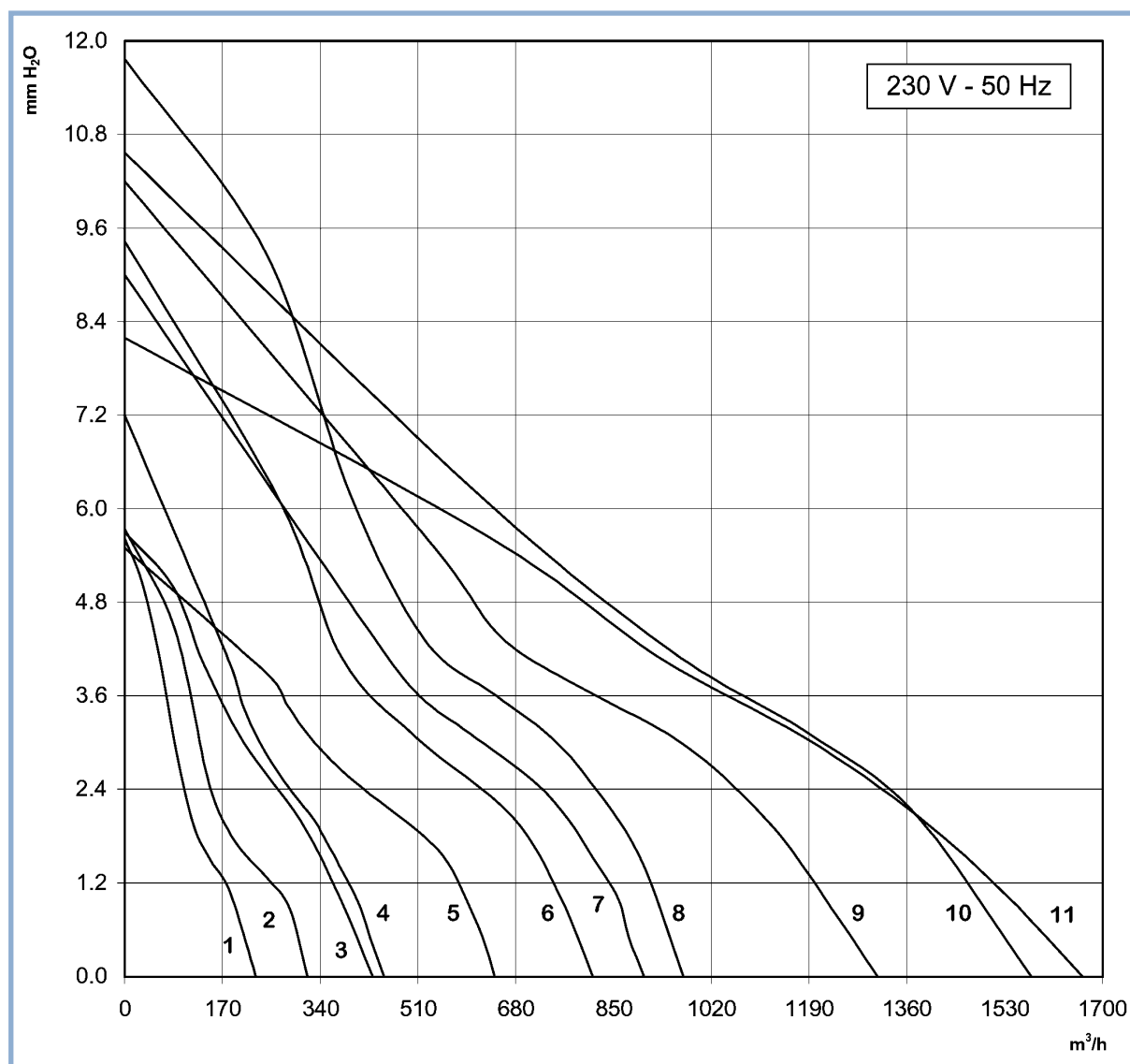
Le curve sotto riportate indicano le prestazioni aerauliche per i più comuni accoppiamenti motore/ventola in alluminio.

AIR FLOW PERFORMANCE MOTOR WITH ALUMINIUM FAN BLADE

The under-drawn curves show the airflow performance for the most common motor/aluminium blade couplings.



- 1** = VN 5-13 + \varnothing 154x34°
- 2** = VN 5-13 + \varnothing 172x34°
- 3** = VN 5-13 + \varnothing 200x28°
- 4** = VN 10-20 + \varnothing 200x28°
- 5** = VN 10-20 + \varnothing 230x28°
- 6** = VNT 16-25 + \varnothing 230x34°
- 7** = VNT 16-25 + \varnothing 254x28°
- 8** = VNT 25-40 + \varnothing 254x28°
- 9** = VNT 25-40 + \varnothing 300x22°
- 10** = VNT 34-45 + \varnothing 300x28°
- 11** = VNT 34-45 + \varnothing 300x34°

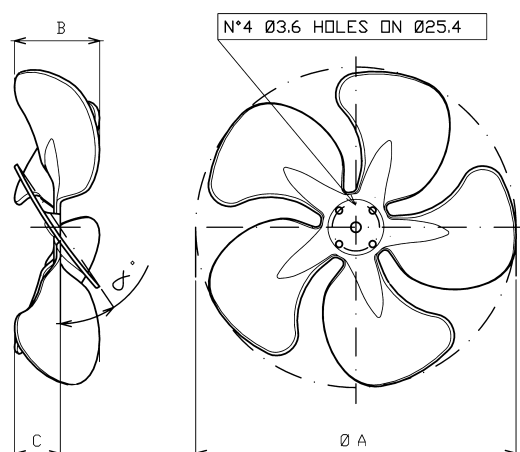


VENTOLE PLASTICA ASPIRANTI

Tavola di identificazione
delle ventole in plastica.
Campo di impiego
-30°C +80°C.

PLASTIC FAN BLADES SUCKING

Selection table
for plastic fan blades.
Temperature range
-30°C +80°C.



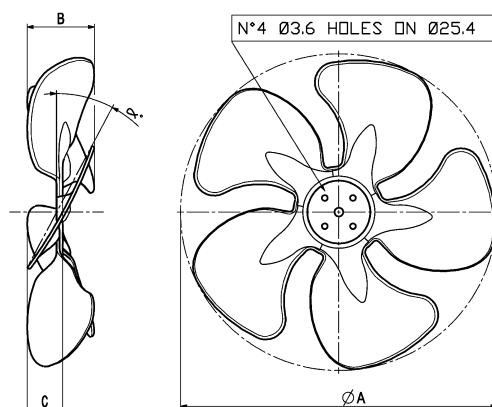
| Ø A | | 154 | 172 | 200 | 230 | 254 |
|-----|-------------|----------------|----------------|----------------|----------------|----------------|
| 22° | Part Number | | | | | 4VEA008 |
| | B | | | | | 47 |
| | C | | | | | 25 |
| | Packing | | | | | 170 |
| 25° | Part Number | | | | 4VEA013 | |
| | B | | | | 46 | |
| | C | | | | 23 | |
| | Packing | | | | 180 | |
| 28° | Part Number | 4VEA012 | | 4VEA009 | 4VEA018 | 4VEA007 |
| | B | 34 | | 44 | 49 | 56 |
| | C | 19 | | 27 | 23,5 | 32 |
| | Packing | 226 | | 180 | 160 | 140 |
| 31° | Part Number | | 4VEA011 | | 4VEA006 | |
| | B | | 40 | | 52 | |
| | C | | 24 | | 28 | |
| | Packing | | 220 | | 170 | |
| 34° | Part Number | | | 4VEA010 | | |
| | B | | | 51 | | |
| | C | | | 29 | | |
| | Packing | | | 170 | | |

VENTOLE PLASTICA PREMENTI

Tavola di identificazione
delle ventole in plastica.
Campo di impiego
-30°C +80°C.

PLASTIC FAN BLADES BLOWING

Selection table
for plastic fan blades.
Temperature range
-30°C +80°C.



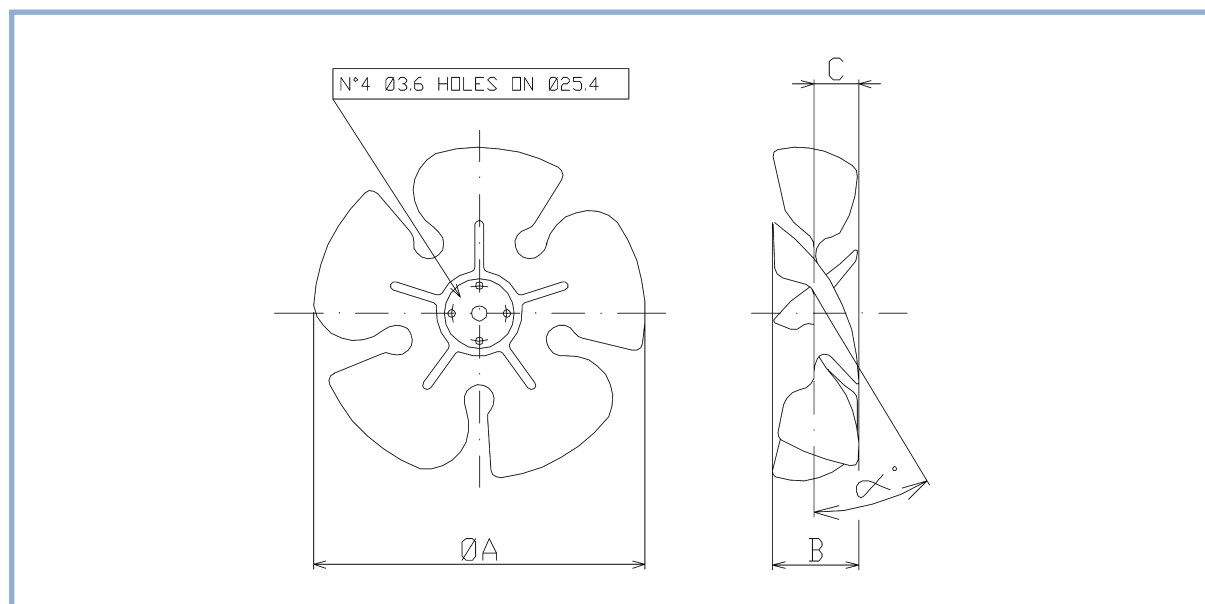
| Ø A | | 154 | 172 | 200 | 230 | 254 |
|-----|-------------|----------------|-----|----------------|-----|----------------|
| 19° | Part Number | 4VEP001 | | | | 4VEP007 |
| | B | 26 | | | | 39 |
| | C | 14 | | | | 25 |
| | Packing | 260 | | | | 160 |
| 22° | Part Number | | | | | |
| | B | | | | | |
| | C | | | | | |
| | Packing | | | | | |
| 25° | Part Number | | | | | 4VEP006 |
| | B | | | | | 46 |
| | C | | | | | 21 |
| | Packing | | | | | 130 |
| 28° | Part Number | | | | | |
| | B | | | | | |
| | C | | | | | |
| | Packing | | | | | |
| 31° | Part Number | | | 4VEP003 | | |
| | B | | | 47,5 | | |
| | C | | | 28 | | |
| | Packing | | | 175 | | |

VENTOLE ALLUMINIO ASPIRANTI

Tavola di identificazione
delle ventole in alluminio
versione aspirante.

ALUMINIUM FAN BLADES SUCKING

Selection table
for aluminium fan blades
sucking version.



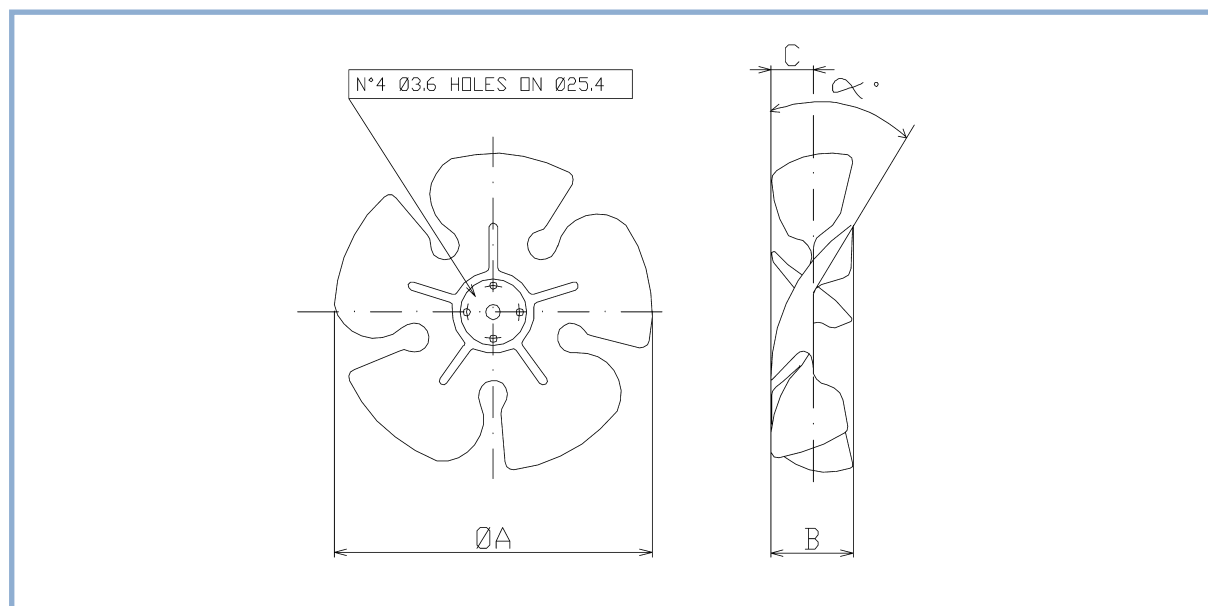
| $\varnothing A$ | | 154 | 172 | 200 | 230 | 254 | 300 |
|-----------------|-------------|----------------|----------------|----------------|----------------|----------------|----------------|
| 19° | Part Number | 4012309 | 4012298 | 4012200 | 4012148 | 4012259 | 4012258 |
| | B | 24 | 25 | 26 | 28 | 29 | 35 |
| | C | 13 | 15 | 15 | 16 | 16 | 23 |
| | Packing | 50 | 50 | 50 | 50 | 45 | 30 |
| 22° | Part Number | 4012002 | 4012005 | 4012009 | 4012013 | 4012015 | 4012018 |
| | B | 27 | 28 | 30 | 33 | 34 | 41 |
| | C | 15 | 15 | 15 | 20 | 20 | 25 |
| | Packing | 50 | 50 | 50 | 50 | 45 | 30 |
| 25° | Part Number | 4012256 | 4012257 | 4012220 | 4012149 | 4012255 | 4012262 |
| | B | 31 | 31 | 33 | 37 | 38 | 45 |
| | C | 17 | 16 | 16 | 22 | 22 | 28 |
| | Packing | 50 | 50 | 50 | 50 | 50 | 20 |
| 28° | Part Number | 4012003 | 4012006 | 4012010 | 4012038 | 4012132 | 4012019 |
| | B | 34 | 35 | 37 | 41 | 42 | 54 |
| | C | 17 | 17 | 18 | 24 | 24 | 29 |
| | Packing | 50 | 50 | 50 | 50 | 50 | 20 |
| 31° | Part Number | 4012004 | 4012299 | 4012011 | 4012014 | 4012016 | 4012020 |
| | B | 37 | 39 | 41 | 46 | 46 | 55 |
| | C | 18 | 18 | 20 | 26 | 27 | 31 |
| | Packing | 50 | 50 | 50 | 40 | 40 | 20 |
| 34° | Part Number | 4012310 | 4012300 | 4012201 | 4012150 | 4012261 | 4012263 |
| | B | 40 | 42 | 44 | 50 | 51 | 63 |
| | C | 21 | 21 | 23 | 29 | 30 | 33 |
| | Packing | 50 | 50 | 50 | 40 | 40 | 20 |

VENTOLE ALLUMINIO PREMENTI

Tavola di identificazione
delle ventole in alluminio
versione premente.

ALUMINIUM FAN BLADES BLOWING

Selection table
for aluminium fan blades
blowing version.



| Ø A | | 154 | 172 | 200 | 230 | 254 | 300 |
|-----|-------------|----------------|----------------|----------------|----------------|----------------|-----------------|
| 19° | Part Number | 4012530 | 4012540 | 4012510 | 4012344 | 4012342 | |
| | B | 24 | 25 | 26 | 28 | 29 | |
| | C | 13 | 15 | 15 | 16 | 16 | |
| | Packing | 50 | 50 | 50 | 40 | 40 | |
| 22° | Part Number | 4012531 | 4012541 | 4012511 | 4012321 | 4012322 | 50121002 |
| | B | 27 | 28 | 30 | 34 | 35 | 40 |
| | C | 15 | 15 | 15 | 20 | 20 | 23 |
| | Packing | 50 | 50 | 50 | 40 | 30 | 20 |
| 25° | Part Number | 4012532 | 4012542 | 4012512 | 4012345 | 4012347 | 50121009 |
| | B | 31 | 31 | 33 | 39 | 40 | 49 |
| | C | 15 | 16 | 16 | 22 | 22 | 29 |
| | Packing | 50 | 50 | 50 | 25 | 25 | 20 |
| 28° | Part Number | 4012533 | 4012543 | 4012513 | 4012324 | 4012325 | 50121003 |
| | B | 34 | 35 | 37 | 43 | 44 | 57 |
| | C | 17 | 17 | 18 | 24 | 24 | 34 |
| | Packing | 50 | 50 | 50 | 25 | 25 | 20 |
| 31° | Part Number | 4012534 | 4012544 | 4012514 | 4012346 | 4012323 | |
| | B | 37 | 39 | 41 | 47 | 48 | |
| | C | 18 | 18 | 20 | 26 | 27 | |
| | Packing | 40 | 40 | 40 | 20 | 20 | |
| 34° | Part Number | 4012535 | 4012545 | 4012515 | 4012329 | 4012328 | 50121005 |
| | B | 40 | 42 | 44 | 52 | 53 | 65 |
| | C | 21 | 21 | 23 | 29 | 30 | 35 |
| | Packing | 40 | 40 | 40 | 20 | 20 | 15 |

ACCESSORI

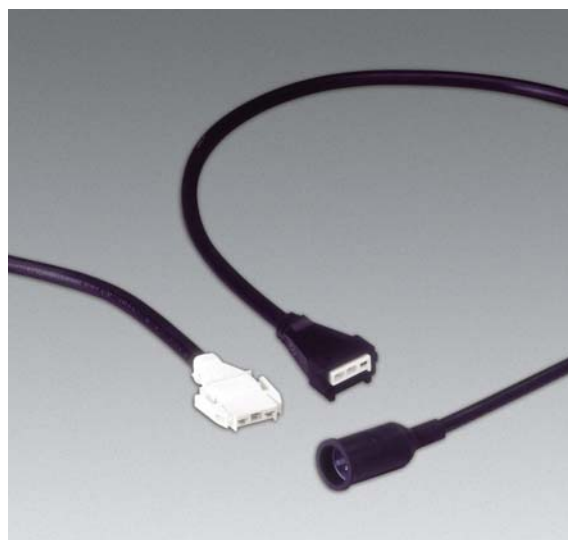
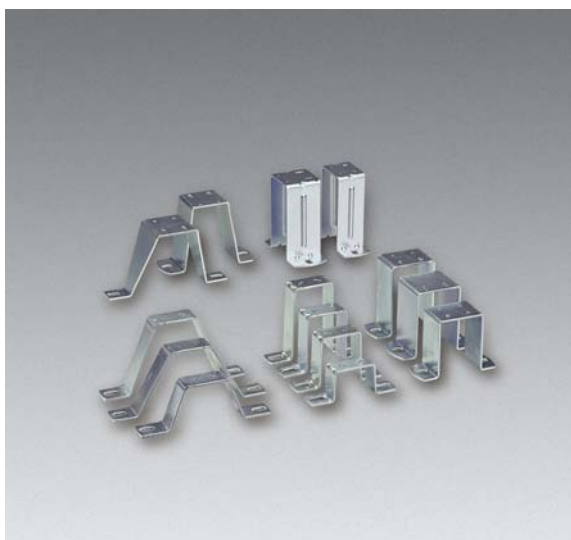
ANELLI, GRIGLIE,
STAFFE, CAVI

Le tipologie di accessori descritti nelle pagine successive sono quelle standard.
Su richiesta, possono essere prodotti componenti specifici secondo disegno del cliente.

ACCESSORIES

RINGS, GRIDS,
BRACKETS, CABLES

The accessories illustrated in the following pages are the standard ones.
Special components can be manufactured on request.

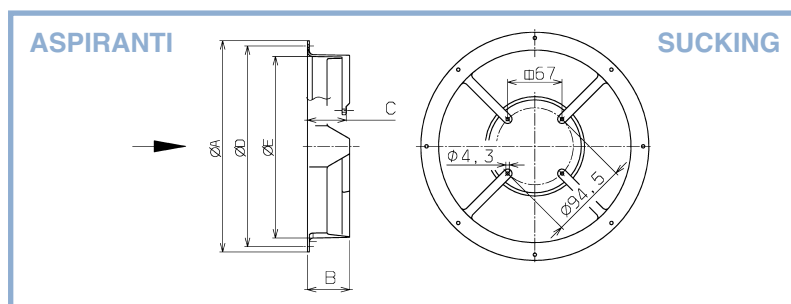


ANELLI

RINGS

Anelli in materiale
termoplastico

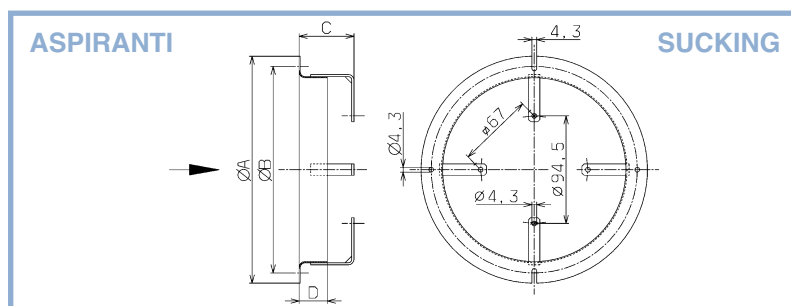
Thermoplastic
rings



| Ø Ventola - Fan Blade | 154 | 172 | 200 | 230 | 254 | |
|-----------------------|---------|---------|---------|---------|---------|--|
| A | 200 | 220 | 248 | 280 | 302 | |
| B | 56 | 56 | 56 | 60 | 60 | |
| C | 48 | 48 | 48 | 51.5 | 51.5 | |
| D | 190 | 208 | 236 | 266 | 290 | |
| E | 162 | 180 | 208 | 238 | 264 | |
| Codice - Part Number | 1072943 | 1072944 | 1072946 | 1072891 | 1072892 | |

Anelli in acciaio
verniciato

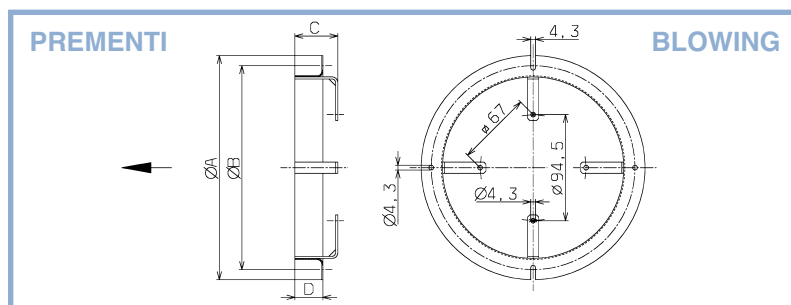
Steel rings
painted



| Ø Ventola - Fan Blade | 154 | 172 | 200 | 230 | 254 | 300 |
|-----------------------|---------|---------|---------|---------|---------|---------|
| A | 200 | 220 | 248 | 278 | 302 | 350 |
| B | 162 | 180 | 208 | 238 | 262 | 308 |
| C | 49 | 49 | 49 | 49 | 49 | 49 |
| D | 25 | 26 | 26 | 26 | 26 | 26 |
| E | 190 | 208 | 236 | 266 | 290 | 344 |
| Codice - Part Number | 3255003 | 3255002 | 3255004 | 3255009 | 3255006 | 3255008 |

Anelli in acciaio
verniciato

Steel rings
painted



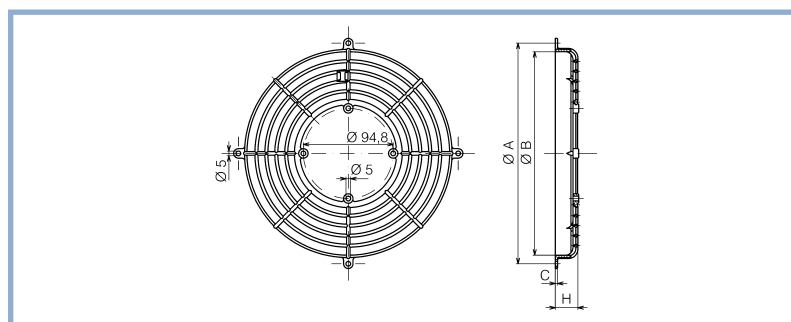
| Ø Ventola - Fan Blade | 154 | 172 | 200 | 230 | 254 | 300 |
|-----------------------|---------|---------|---------|---------|---------|---------|
| A | 200 | 220 | 248 | 278 | 302 | 356 |
| B | 162 | 180 | 208 | 238 | 262 | 308 |
| C | 36 | 36 | 36 | 36 | 36 | 36 |
| D | 25 | 26 | 26 | 26 | 26 | 30 |
| E | 190 | 208 | 236 | 266 | 290 | 344 |
| Codice - Part Number | 3255010 | 3255011 | 3255012 | 3255013 | 3255014 | 3255078 |

GRIGLIE

GRIDS

Griglie in materiale termoplastico

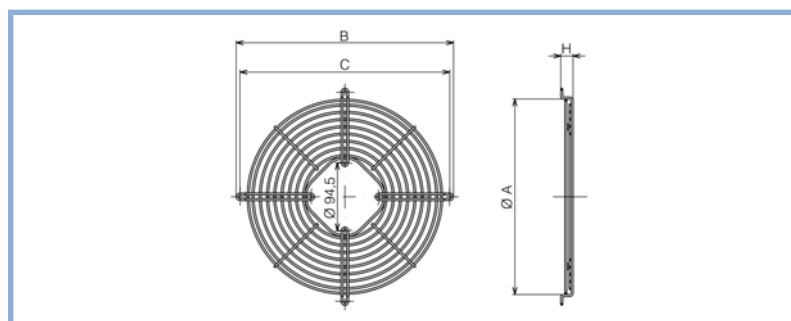
Thermoplastic grids



| Ø Ventola - Fan Blade | | | 200 | 230 | 254 | |
|-----------------------|--|--|---------|---------|---------|--|
| A | | | 232 | 264 | 288 | |
| B | | | 214 | 240 | 264 | |
| C | | | 2.5 | 4.0 | 4.0 | |
| H | | | 24 | 27 | 24 | |
| Codice - Part Number | | | 1055223 | 1055594 | 1055224 | |

Griglie in acciaio galvanizzato

Galvanized steel grids



| Ø Ventola - Fan Blade | 154 | 172 | 200 | 230 | 254 | 300 |
|-----------------------|---------|---------|---------|---------|---------|---------|
| A | 170 | 188 | 214 | 246 | 270 | 324 |
| B | 202 | 220 | 248 | 278 | 300 | 354 |
| C | 190 | 208 | 236 | 266 | 290 | 344 |
| D | - | - | - | - | - | - |
| H | 11 | 11 | 25 | 27 | 17 | 17 |
| Codice - Part Number | 1055299 | 1055300 | 1055317 | 1055318 | 1055303 | 1055304 |

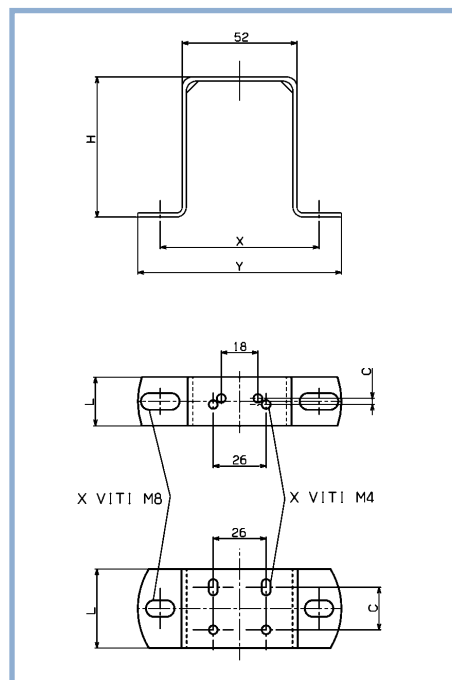
STAFFE

BRACKETS

Staffe dritte

Straight brackets

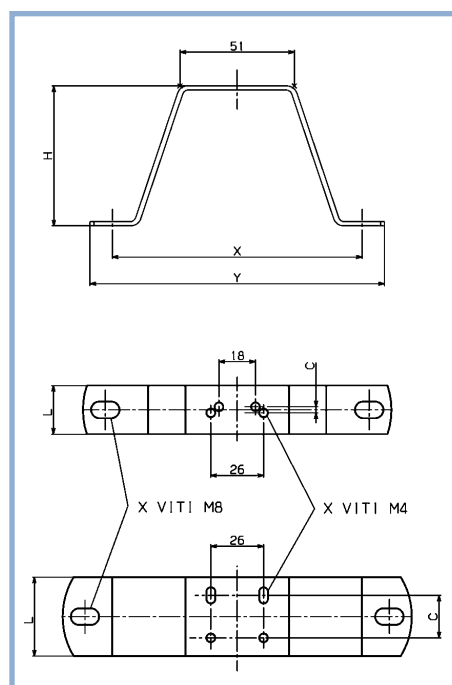
| Codice Part Number | H | X | Y | C | L |
|-----------------------|-----|----|-----|------|----|
| 1038101 | 39 | 81 | 106 | 3,0 | 24 |
| 1038103 | 52 | 81 | 106 | 3,0 | 24 |
| 1038110 | 72 | 81 | 106 | 3,0 | 24 |
| 1038113 | 84 | 81 | 106 | 3,0 | 24 |
| 1038007 | 73 | 78 | 100 | 21,0 | 39 |
| 1038049 | 84 | 78 | 100 | 21,0 | 39 |
| 1038003 | 109 | 78 | 100 | 21,0 | 39 |
| 1038002 | 109 | 78 | 100 | 34,5 | 49 |



Staffe a V

V-form brackets

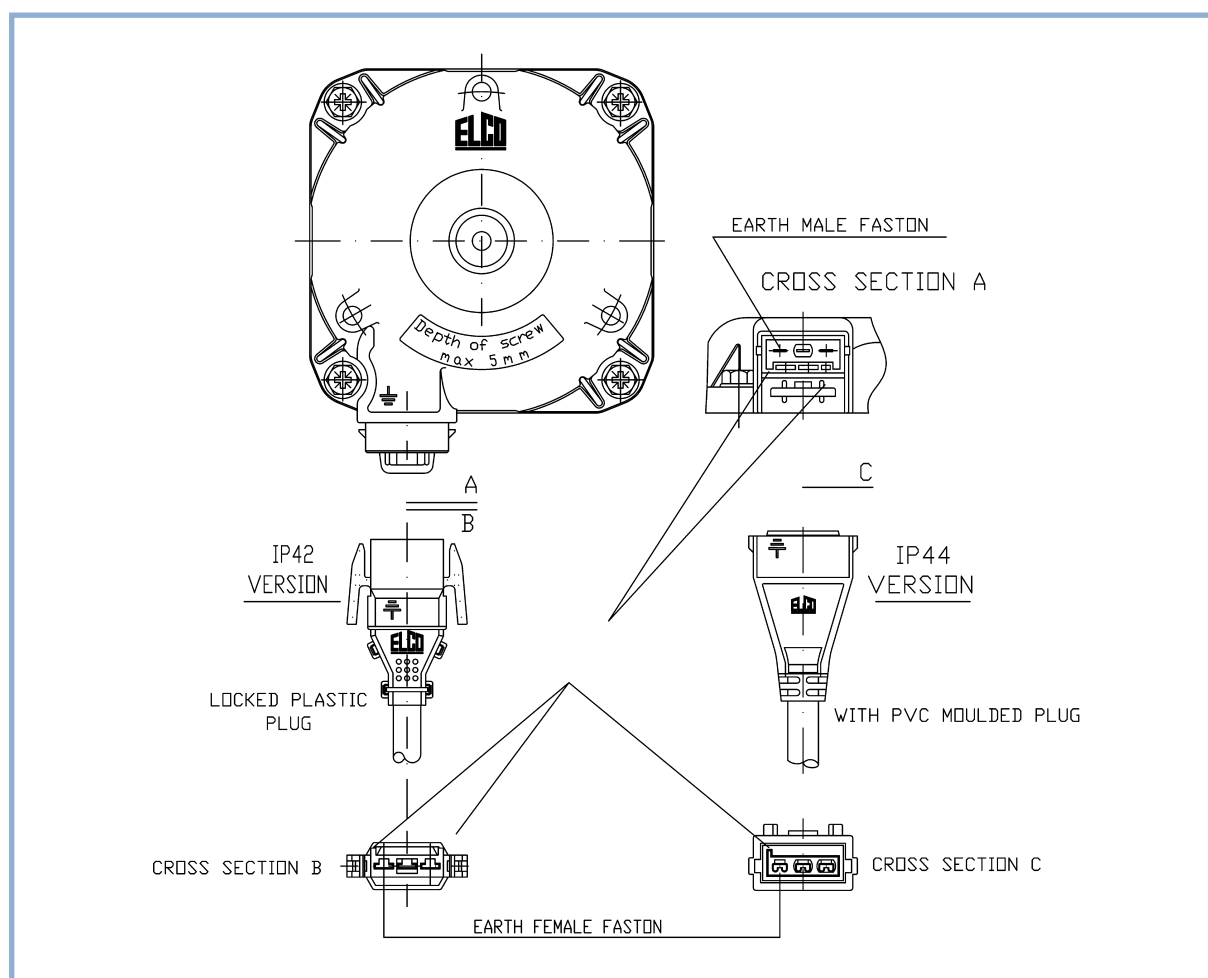
| Codice Part Number | H | X | Y | C | L |
|-----------------------|-----|-----|-----|------|----|
| 1038152 | 52 | 130 | 152 | 3,0 | 24 |
| 1038162 | 72 | 159 | 181 | 3,0 | 24 |
| 1038157 | 84 | 142 | 164 | 3,0 | 24 |
| 1038061 | 90 | 110 | 132 | 34,5 | 49 |
| 1038009 | 112 | 150 | 172 | 21,0 | 39 |



CAVI CABLES

TRIPOLARE CON 3-CORE CABLE

CONNETTORE WITH PLUG



| Lunghezza - Lenght mm | Sezione - Section mm ² | IP42 Codice - Part Number | IP44 Codice - Part Number |
|--------------------------|--------------------------------------|------------------------------|------------------------------|
| 500 | 0,75 | 3-334-116/IMB | 3-334-007/IMB |
| 1000 | 0,75 | 3-334-117/IMB | 3-334-008/IMB |
| 1500 | 0,75 | 3-334-118/IMB | 3-334-009/IMB |
| 2000 | 0,75 | 3-334-120/IMB | 3-334-010/IMB |
| 2500 | 0,75 | 3-334-121/IMB | 3-334-011/IMB |
| 3000 | 0,75 | 3-334-122/IMB | 3-334-012/IMB |
| 3500 | 1,00 | 3-209-033/IMB | 3-209-017/IMB |
| 4000 | 1,00 | 3-209-034/IMB | 3-209-018/IMB |
| 4500 | 1,00 | 3-209-035/IMB | 3-209-019/IMB |
| 5000 | 1,00 | 3-209-036/IMB | 3-209-020/IMB |

MOTORI M58

I motori shaded pole della **Serie M58** sono specificatamente studiati per applicazioni nel settore refrigerazione industriale, commerciale, piccole unità condensanti.

M58 MOTORS

The fans of the **M58 Series** are designed for industrial refrigeration, commercial refrigeration and small condensing units.

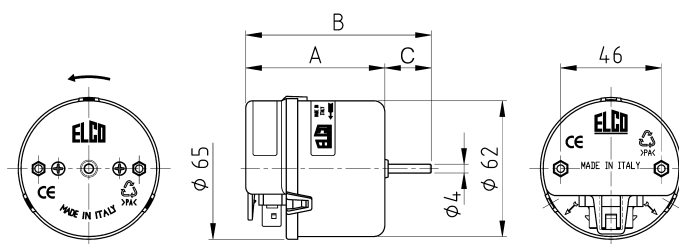


MOTORI M58

M58 MOTORS

I motori della serie M58 sono monofase a 2 poli schermati con corpo in materiale termoplastico, grado di protezione IP42, classe di isolamento B, funzionanti alla tensione nominale di 230 V, 50-60 Hz, potenza di 1-2 Watt. Supporti con bronzine autolubrificanti e autoallineanti, albero Ø 4 mm, rotazione antioraria vista lato albero, protezione a rotore bloccato per impedenza, conformi alle norme CENELEC EN 60335-1. Posizioni di fissaggio verticale e orizzontale, limiti di temperatura -30°C +40°C.

The M58 series motors are shaded pole motors, 2 poles, with plastic body, protection class IP42, insulation class B, designed for a nominal tension of 230 V, 50-60 Hz, output power 1-2 W. Self-lubricating and self-aligning sleeve bearings, 4 mm shaft diameter, CCW rotation shaft view, impedance locked rotor protection, complying with EN 60335-1 CENELEC standards. Suitable for horizontal and vertical mounting, within an ambient temperature range of -30°C +40°C.



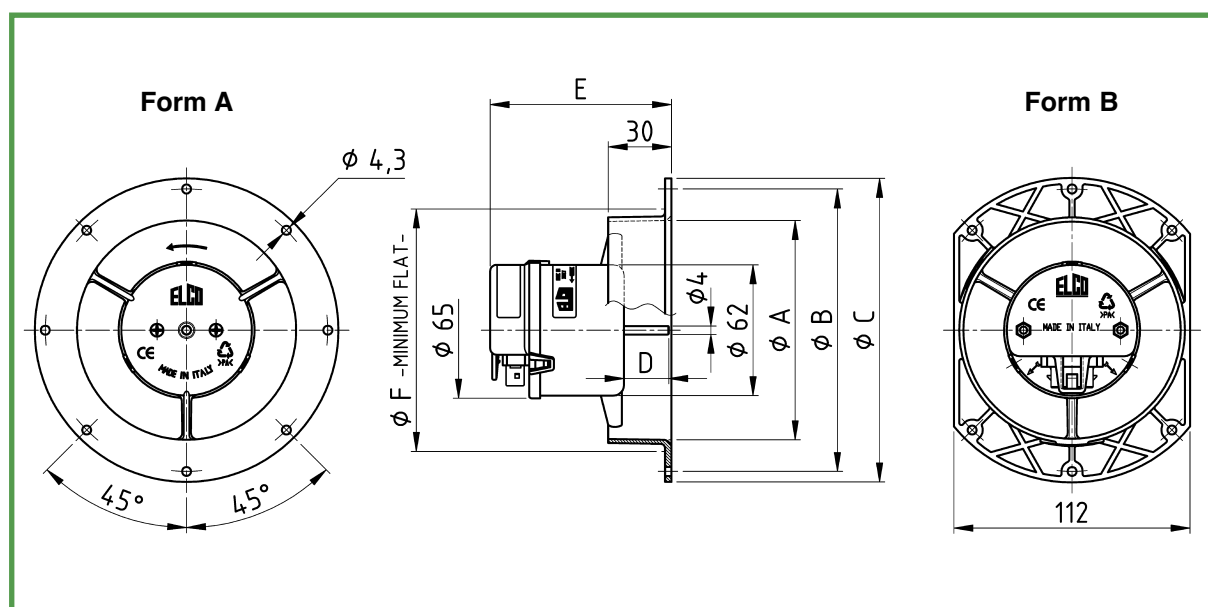
| Codice Part Numb. | Descrizione Description | Volt | Hz | W out | W in | Amp | RMP | Veloc. Speed | A | B | C |
|-------------------|-------------------------|------|-------|-------|------|------|------|--------------|------|------|----|
| 4-032-001 | M58 1-12 | 230 | 50/60 | 1,0 | 10 | 0,07 | 2500 | 1 | 63,5 | 84,7 | 21 |
| 4-032-007 | M58 1-20 | 230 | 50 | 1,0 | 15 | 0,10 | 1300 | 1 | 73,5 | 91,7 | 18 |
| 4-032-008 | M58 1,5-30 | 230 | 50 | 1,5 | 18 | 0,12 | 1600 | 1 | 73,5 | 91,7 | 18 |
| 4-032-009 | M58 1-30 | 127 | 60 | 1,0 | 22 | 0,27 | 1800 | 1 | 73,5 | 91,7 | 18 |

MOTORI MA58

MA58 MOTORS

Ventilatori costruiti interamente in materiale termoplastico equipaggiati di motore M58, come descritto alla pagina 32 e di anello.
Le ventole sono fornite separatamente e illustrate alle pagine 34 e 35.

Fans entirely made of thermoplastic material, equipped with M58 motor, as described in page 32, and ring.
Fan blades are supplied separately and are illustrated in pages 34 and 35.



Prestazioni - Performances

| Codice Part Number | Descrizione Description | Volt | Hz | W Out | W In | Amp | RPM | Vel. Speed | Form |
|-----------------------|----------------------------|------|-------|-------|------|------|------|---------------|------|
| 4-032-002 | MA58 1-12-100 | 230 | 50/60 | 1,0 | 10 | 0,07 | 2500 | 1 | A |
| 4-032-003 | MA58 1-12-100-S | 230 | 50/60 | 1,0 | 10 | 0,07 | 2500 | 1 | B |
| 4-032-004 | MA58 1-20-154 | 230 | 50 | 1,0 | 15 | 0,10 | 1300 | 1 | A |
| 4-032-005 | MA58 1,5-30-154 | 230 | 50 | 1,5 | 18 | 0,12 | 1600 | 1 | A |
| 4-032-006 | MA58 1-30-154 | 127 | 60 | 1,0 | 22 | 0,27 | 1800 | 1 | A |

Dimensioni - Dimensions

| Codice Part Number | Descrizione Description | A | B | C | D | E | F |
|-----------------------|----------------------------|-----|-----|-----|----|----|-----|
| 4-032-002 | MA58 1-12-100 | 104 | 134 | 144 | 21 | 86 | 115 |
| 4-032-003 | MA58 1-12-100-S | 104 | 134 | 144 | 21 | 86 | 115 |
| 4-032-004 | MA58 1-20-154 | 160 | 190 | 200 | 18 | 86 | 168 |
| 4-032-005 | MA58 1,5-30-154 | 160 | 190 | 200 | 18 | 96 | 168 |
| 4-032-006 | MA58 1-30-154 | 160 | 190 | 200 | 18 | 96 | 168 |

MA58

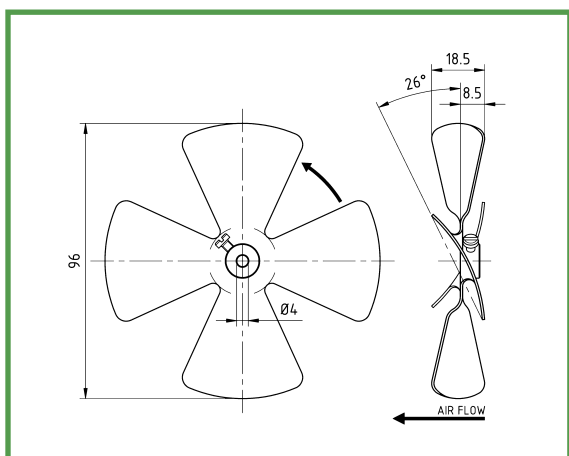
VENTOLE ALLUMINIO

Questa serie di ventole in alluminio, disponibile sia nella versione aspirante che premente Ø 96 mm, è stata studiata per essere impiegata nei ventilatori M58.

MA58

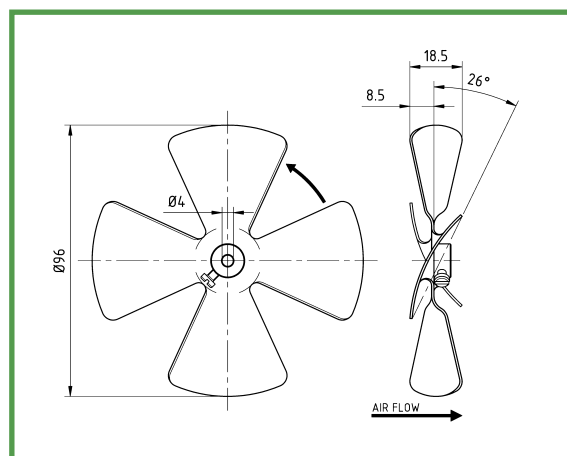
ALUMINIUM FAN BLADES

This aluminium fan blades range is available with 96 mm diameter, sucking and blowing version. Specifically designed to be fitted to M58 fan motors.



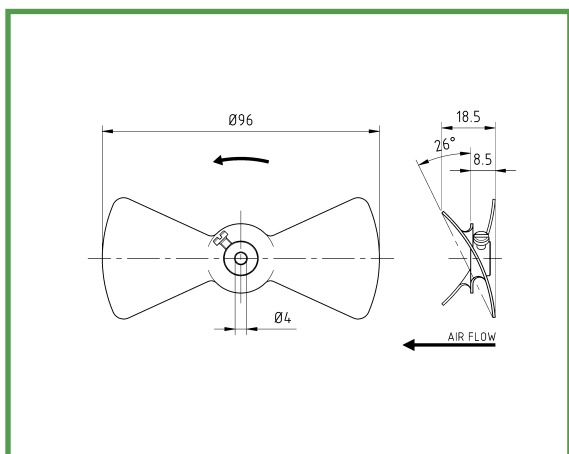
Ventola aspirante - Sucking Fan Blade

| Codice Part Number | Descrizione Description | Imballo Packing |
|-----------------------|----------------------------|--------------------|
| 40121003/IMB | Ø 96 mm - 26° | 60 Pcs |



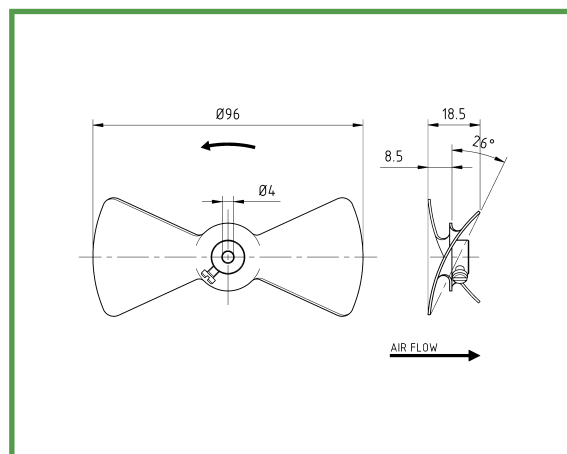
Ventola premente - Blowing Fan Blade

| Codice Part Number | Descrizione Description | Imballo Packing |
|-----------------------|----------------------------|--------------------|
| 40121002/IMB | Ø 96 mm - 26° | 60 Pcs |



Ventola aspirante - Sucking Fan Blade

| Codice Part Number | Descrizione Description | Imballo Packing |
|-----------------------|----------------------------|--------------------|
| 40121006/IMB | Ø 96 mm - 26° | 60 Pcs |



Ventola premente - Blowing Fan Blade

| Codice Part Number | Descrizione Description | Imballo Packing |
|-----------------------|----------------------------|--------------------|
| 40121005/IMB | Ø 96 mm - 26° | 60 Pcs |

MA58

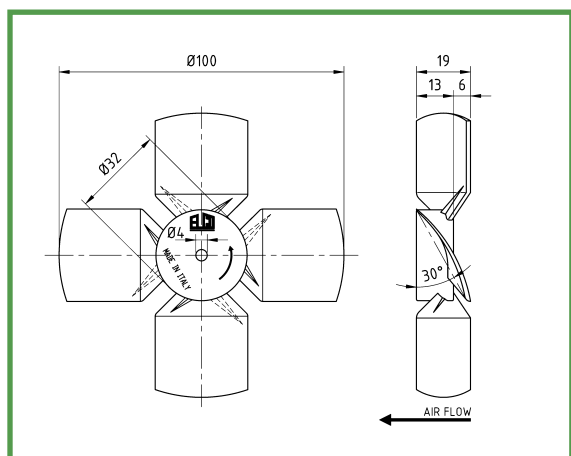
VENTOLE PLASTICA

Questa serie di ventole in plastica, disponibile sia nella versione aspirante che premente Ø 100 e 154 mm, è stata studiata per essere impiegata nei ventilatori M58.

MA58

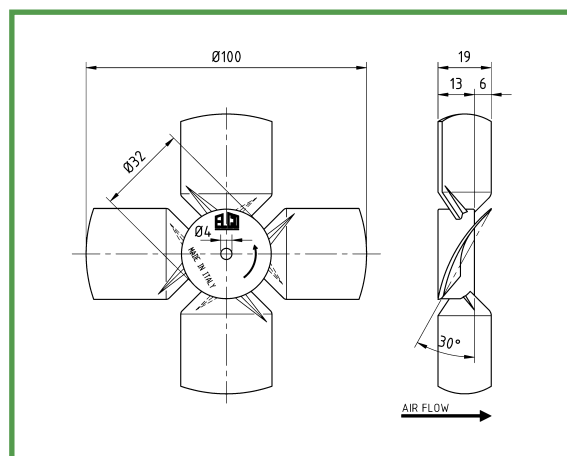
PLASTIC FAN BLADES

This plastic fan blades range is available with 100 and 154 mm diameters, sucking and blowing version. Specifically designed to be fitted to M58 fan motors.



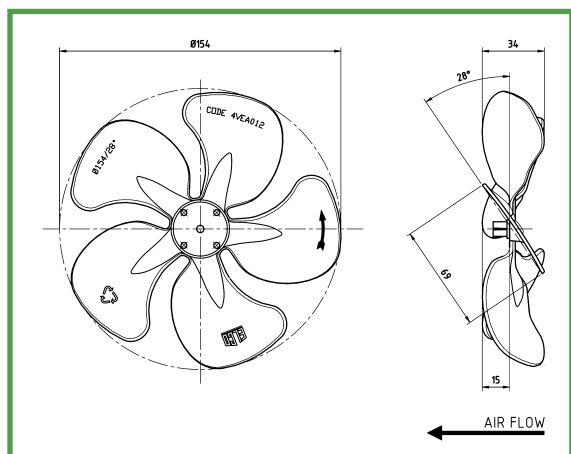
Ventola aspirante - Sucking Fan Blade

| Codice Part Number | Descrizione Description | Imballo Packing |
|-----------------------|----------------------------|--------------------|
| 40121004/IMB | Ø100 mm - 30° | 60 Pcs |



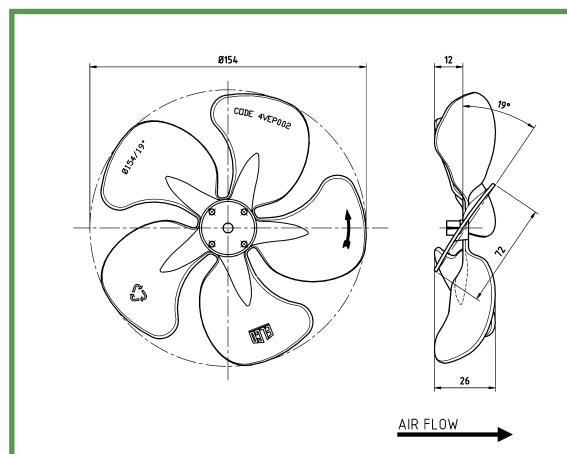
Ventola premente - Blowing Fan Blade

| Codice Part Number | Descrizione Description | Imballo Packing |
|-----------------------|----------------------------|--------------------|
| 40121001/IMB | Ø100 mm - 30° | 60 Pcs |



Ventola aspirante - Sucking Fan Blade

| Codice Part Number | Descrizione Description | Imballo Packing |
|-----------------------|----------------------------|--------------------|
| 4VEA012/1 | Ø154 mm - 28° | 226 Pcs |



Ventola premente - Blowing Fan Blade

| Codice Part Number | Descrizione Description | Imballo Packing |
|-----------------------|----------------------------|--------------------|
| 4VEP002/IMB | Ø154 mm - 19° | 226 Pcs |

MOTORI CN

CN MOTORS

I motori a poli schermati della **Serie CN** sono progettati per impiego in unità evaporanti, condensanti, vetrine e banchi frigoriferi. Sono disponibili nella versione monofase a 2 poli, con pacco lamellare a vista, grado di protezione IP20, classe di isolamento B, funzionanti alla tensione nominale di 220 V, 50 Hz e con potenze da 1 a 8 Watt.

CN Series shaded pole motors are designed for use in evaporating and condensing units, display cases and freezing cases. They are available in single phase version, 2 poles, with stack uncovered, protection class IP20, insulation class B. These motors are designed for a nominal tension of 230 V, 50 Hz, with an output power ranging from 1 to 8 Watt.



MOTORI CN

CN MOTORS

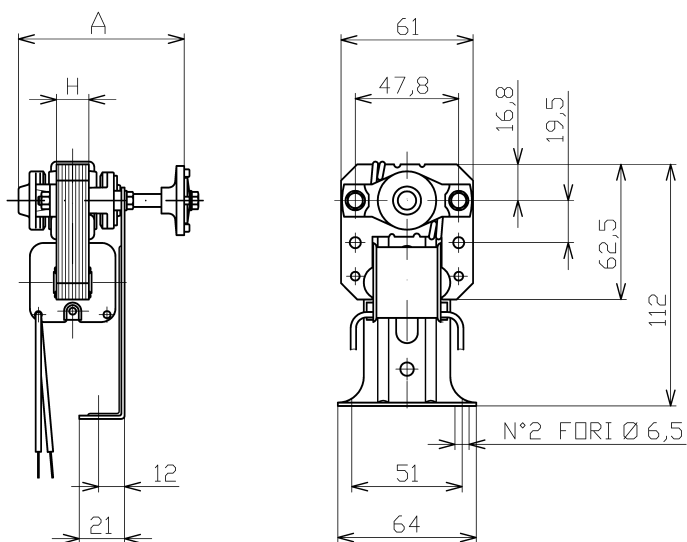
I motori della serie CN sono disponibili sia montati su staffa che nella versione con anello e ventola in materiale termoplastico.

CN series motors are available either with bracket mounting or with thermoplastic ring and fan blade.

Form A

Motore CN con staffa

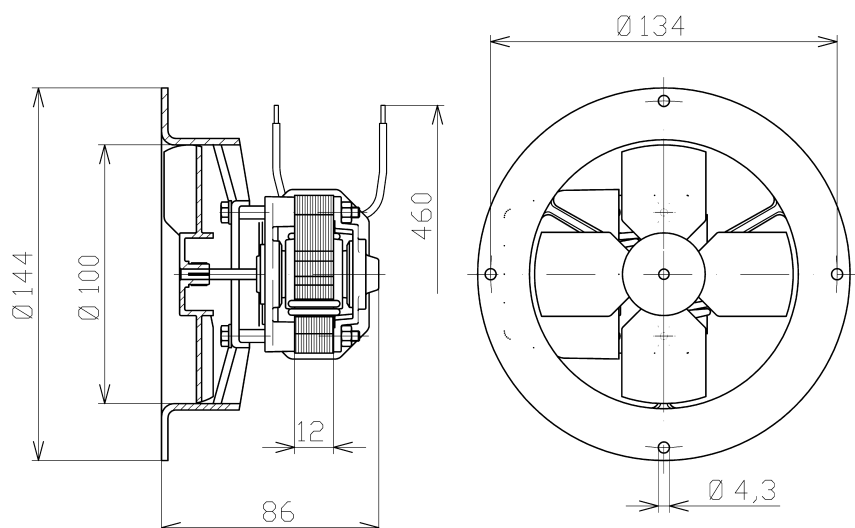
CN Motor with bracket



Form B

Motore CN con anello e ventola

CN Motor with ring and fan blade



Prestazioni - Performances

| Codice Part Number | Volt | W Out | W In | Amp | RMP | Cavo Cable | Imb. Pack. | H | A | Form |
|--------------------|------|-------|------|------|------|------------|------------|----|------|------|
| 4-014-1317 | 230 | 6,3 | 31 | 0,25 | 2500 | 500 | 30 Pcs. | 30 | 91,0 | A |
| 4-014-1392 | 230 | 4,0 | 27 | 0,20 | 2400 | 500 | 30 Pcs. | 20 | 82,5 | A |
| 4-038-1002 | 230 | 1,3 | 13 | 0,12 | 2200 | 460 | 18 Pcs. | - | - | B |

NOTE

NOTES

[illegible]

La società ELCO-E-TRADE Srl si riserva di modificare anche senza preavviso le indicazioni tecniche contenute nel catalogo.
L'utilizzatore è responsabile della corretta installazione dei componenti descritti nel catalogo rispettando le norme in vigore in ciascun Paese.

ELCO-E-TRADE Srl reserves itself the right to modify also without prior notice all indicated technical information.

The user is responsible for the correct installation of components listed in the catalogue in compliance with existing regulations of each Country.



ELCO-E-TRADE SRL

Via Marconi, 1
20065 INZAGO Milano - Italia
Phone +39 02 95319.1
Fax +39 02 95310138
www.elco-spa.com
info@elco-spa.com



ELECTROMECHANICA COLOMBO & COMPAÑIA S.A. DE C.V.

Calle Pirineos 515 - A Bodega 7
Querétaro, QRO CP 76120
México
Phone + 52 442 2176062
Fax + 52 442 2176218
www.elco.com.mx
ventas@elco.com.mx



ELCO DE COLOMBIA S.A.S.

Dirección Avda. Carrera 129 No 22B-57, Int. 26
BOGOTÁ D.C.
Colombia
Phone +57 1 744 0959
Fax +57 1 7440959 Dial 3
info@elco.com.co



ELCO DO BRASIL LTDA

Avenida Armando De Andrade, 549
06754-210 - TABOÃO DA SERRA
SP-Brasil
Phone (005511) 47019337 / 47019650 / 47878029
Fax (005511) 47873106
henrique.pinto@elcobrasil.com



ELCO MOTORS ASIA PTE LTD

22 Kallang Avenue #07-06
Hong Aik Industrial Building
SINGAPORE 339413
Phone +65 6298 9169
Fax +65 6291 6520
andy.lieu@elcoasia.com
elcoasia@singnet.com.sg



ELCO MOTORS FZE

Jebel Ali Free Zone Area
P.O. Box 18358 - DUBAI,
U.A.E.
Phone +971 (04) 8833392
Fax +971 (04) 8833390
sales@elcomotors.ae



ELCO CHINA LIMITED

Xincheng Industrial Zone, Hengli
Guangdong Province, PRC
Phone +86 769 82203112
Fax +86 769 83727379
simon.eldar@elco-china.com



ELCO MOTORS Ltd

Office 502 Building 38/4, letter A, Nevsky prospect
ST PETERSBURG, Russia 191011
Phone + 7 (812) 3349961
info@elcorussia.com

