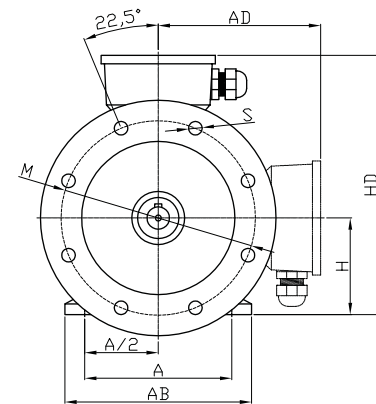
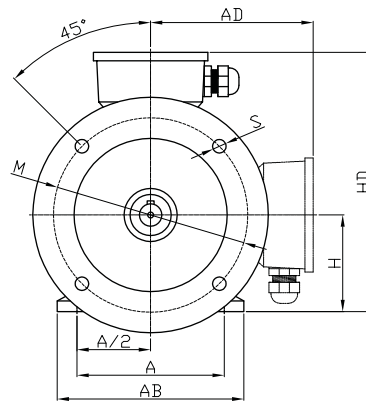
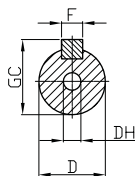
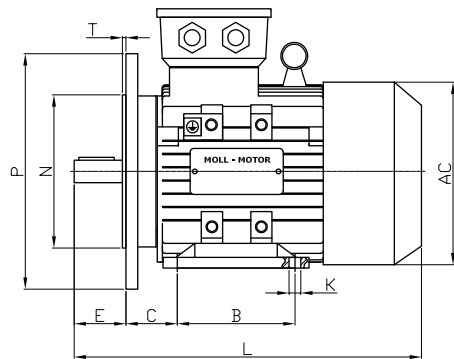


B35



www.elektromotory.cz

Baugröße bis 200
frame size up to 200

Baugröße 225 bis 355
frame size from 225 up to 355

| Baugröße frame size | Pole poles | A | A/2 | B | C | D | E | F | G | H | K | M | N | P | S | T | AB | AC | AD | HD | L | DH* |
|------------------------|---------------|-----|------|-----|----|----|----|---|------|----|-----|-----|-----|-----|------|-----|-----|-----|-----|-----|-----|-------|
| 56M | 2 / 4 | 90 | 45 | 71 | 36 | 9 | 20 | 3 | 7,2 | 56 | 5,8 | 100 | 80 | 120 | 7 | 3 | 115 | 110 | 100 | 156 | 199 | M4x12 |
| 63M | 2 / 4 | 100 | 50 | 80 | 40 | 11 | 23 | 4 | 8,5 | 63 | 7,0 | 115 | 95 | 140 | 10 | 3 | 135 | 130 | 115 | 180 | 230 | M4x12 |
| 71M | 2 / 4 / 6 | 112 | 56 | 90 | 45 | 14 | 30 | 5 | 11,0 | 71 | 7,0 | 130 | 110 | 160 | 10 | 3,5 | 150 | 145 | 127 | 195 | 255 | M5x12 |
| 80M | 2 / 4 / 6 / 8 | 125 | 62,5 | 100 | 50 | 19 | 40 | 6 | 15,5 | 80 | 10 | 165 | 130 | 200 | 11,5 | 3,5 | 165 | 158 | 140 | 220 | 300 | M6x16 |
| 90S | 2 / 4 / 6 / 8 | 140 | 70 | 100 | 56 | 24 | 50 | 8 | 20,0 | 90 | 10 | 165 | 130 | 200 | 12 | 3,5 | 180 | 177 | 160 | 255 | 330 | M8x19 |
| 90L | 2 / 4 / 6 / 8 | 140 | 70 | 125 | 56 | 24 | 50 | 8 | 20,0 | 90 | 10 | 165 | 130 | 200 | 12 | 3,5 | 180 | 177 | 160 | 255 | 360 | M8x19 |