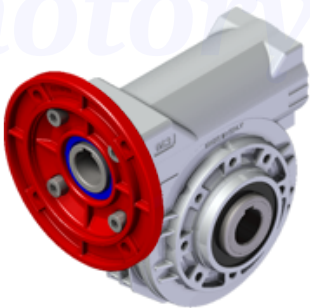


Price

Lead time

Configuration

Type:	P
Size:	050
Input:	71 B14 ø105
Output shaft/bore:	Standard ø25
Mounting:	FB
Mounting position:	B3
Input bore:	Standard



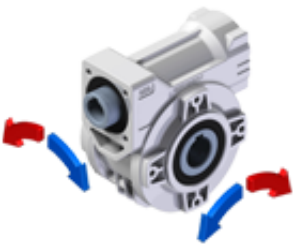
Technical data

Input rpm ( $n_1$ ):	1400 min <sup>-1</sup>
Output rpm ( $n_2$ ):	17.50 min <sup>-1</sup>
Ratio (i):	80.00
Nominal power ( $P_{1R}$ ):	0.19 kW
Nominal torque ( $M_{2R}$ ):	57 Nm
Dynamic efficiency (RD):	54%

Selection

Motor power ( $P_{1M}$ ):	0.25 kW
Output torque ( $M_{2M}$ ):	74 Nm
Service factor (f.s.):	0.8

Direction of rotation



Lubrication

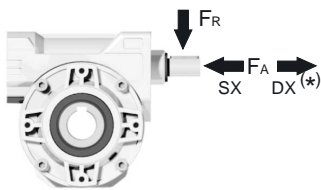
Oil quantity:	0.14l
AGIP:	Telium VSF 320
SHELL:	Omala S4 WE 320

On our website

Features	Reversibility
How to order	Thermal limit
Dimension	Atex certification
Accessories/options	Installation check list
Electric motors	Spare parts list
Selection guide - fs	Complete catalogue
Mounting pos. - lubricant	Selection by power (xls)
Calc. the overhung load	

Axial and radial loads

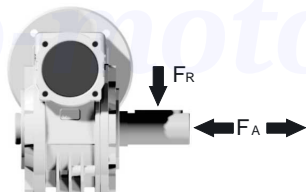
Input shaft



$n_2$ (min <sup>-1</sup> )	FA (N)	FR (N)
1400	76	380

\*Strong axial loads in the DX direction are not allowed

Output shaft



$n_2$ (min <sup>-1</sup> )	FA (N)	FR (N)
200	240	1200
150	280	1400
100	300	1500
75	340	1700
50	380	1900
25	480	2500
15	560	2800

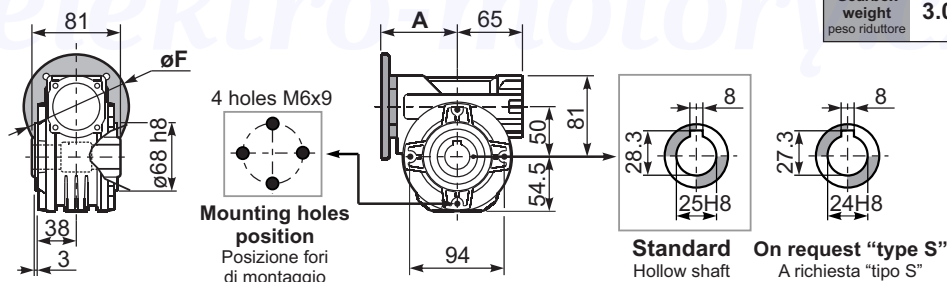
Note

3D dimensions on the Web

P050**FB**... Basic wormbox  
Riduttore base

Gearbox weight  
peso riduttore **3.00 kg**

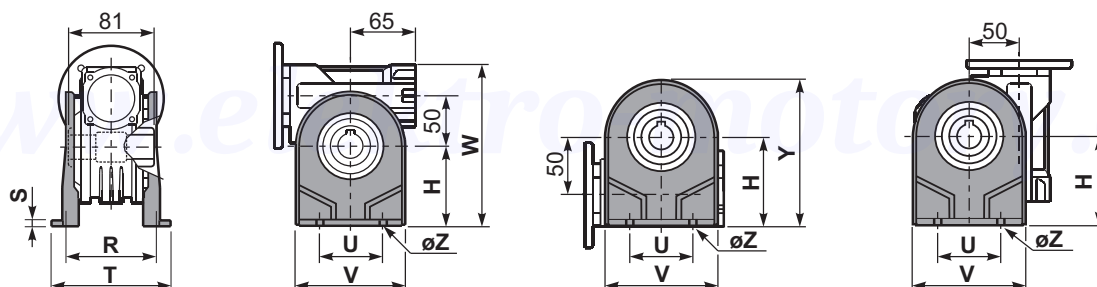
M. flanges	Kit code	øF	A
63B5	K050.4.041	138	78.5
71B5	K050.4.042	160	76
80B5	K050.4.043	200	76.5
56B14	KC40.4.049	80	76
63B14	K050.4.047	90	78.5
71B14	K050.4.045	105	76
80B14	K050.4.046	120	76.5



P050**PA**... Feet  
Piedini

P050**PB**... Feet  
Piedini

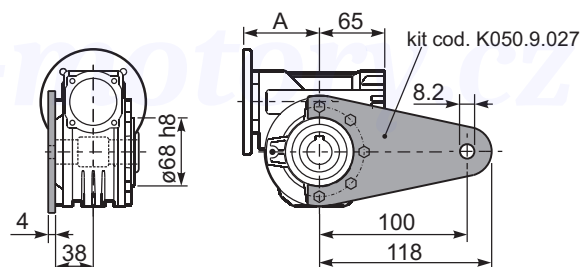
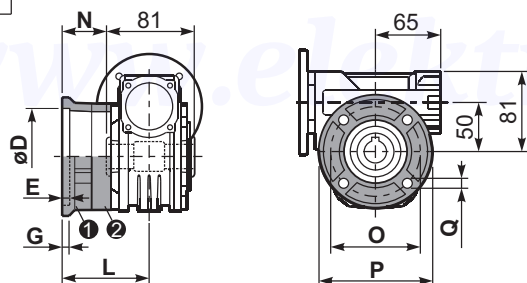
P050**PV**... Feet  
Piedini



	H	R	S	T	U	V	Y	W	øZ	kit code
type B	82	98.5	3.5	123	63	113	138.5	163	ø10.5	K050.9.022
type S	85	96	10	114	85	110	139.5	166	ø10	KS050.9.023

P050**FC**... Output flange  
Flangia uscita

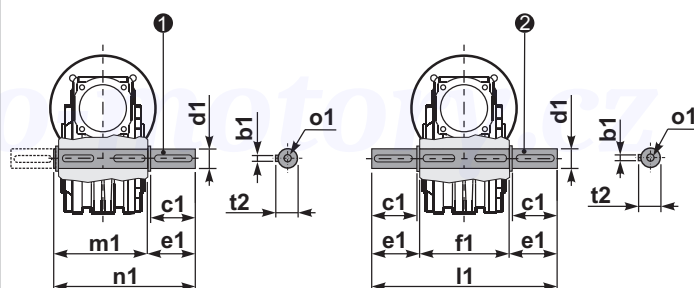
P050**BR**... Reaction arm  
Braccio di reazione



type B	øD	E	G	L	N	O	P	Q	kit code
FC	70 <sup>+0.20</sup> <sub>+0.15</sub>	9	12	85	44.5	90	123	10.5	① K050.9.010 ② -
FL	70 <sup>+0.20</sup> <sub>+0.15</sub>	9	12	114.5	74	90	123	10.5	① K050.9.010 ② K050.0.200
type S	øD	E	G	L	N	O	P	Q	kit code
F1	110 <sup>+0.20</sup> <sub>+0.15</sub>	4	11	83.5	43	130	160	10	① KS050.9.012 ② -
F2	70 <sup>+0.20</sup> <sub>+0.15</sub>	9	12	76.5	36	90	123	10.5	① KS050.9.014 ② -
F3	95 <sup>+0.035</sup> <sub>0</sub>	4	10	66.5	26	115	140	10	① KS050.9.013 ② -

P050.....**S**... Single Shaft  
Albero lento semplice

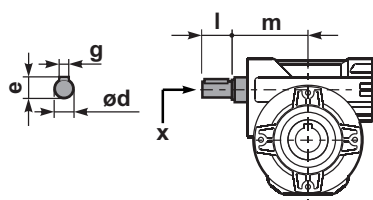
P050.....**D**... Double Shaft  
Albero lento bisp.



① kit cod. K050.5.028 type B  
kit cod. KS050.5.030 type S

② kit cod. K050.5.029 type B  
kit cod. KS050.5.031 type S

R050FB... Input shaft  
Albero in entrata



	ød	e	g	l	m	x	kit code
type B	16 h6	18	5	30	74.5	M6x16	① K050.5.006 PAM71 ② K050.5.007 PAM80
type S	14 h6	16	5	30	74.5	M5x10	① KS050.5.008 PAM71 ② KS050.5.009 PAM80

	b1	c1	d1	e1	f1	l1	m1	n1	t2	o1
type B	8	52	25 <sup>-0.005</sup> <sub>-0.020</sub>	59.5	81	200	86.5	146	28	M8x20
type S	8	50	24 <sup>-0.005</sup> <sub>-0.020</sub>	68.8	81	218	86.5	155	27	M8x20