

467.3.402-10

Vacuum cleaner motor performance

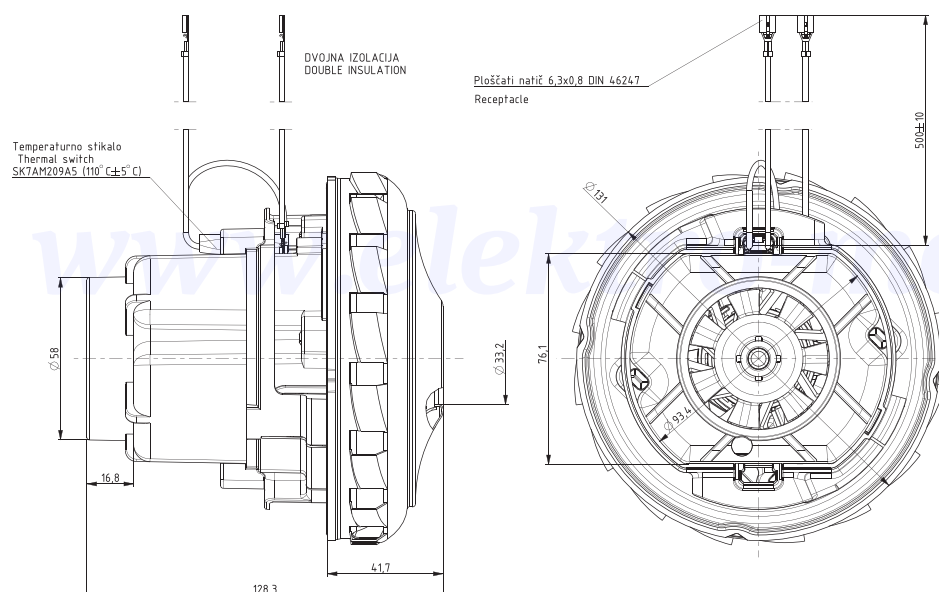
DOMEL®

Technical data:

Normal operation:	P_m	\geq	1230	W
Vacuum:	P_{max}	\geq	24,5 98,4	kPa in H ₂ O
Air Flow at $\phi 50$:	$Q_{\phi 50}$	\geq	68 145	dm ³ /s CFM
Air Power:	P_{2max}	\geq	480	W
Efficiency:	η_{max}	\geq	39	%
Mass:	m	$=$	1,21	kg

Voltage:	230 V
Frequency:	50 Hz
Nominal Power:	1200 W

Max. power 1300W



Dimensional and performance data are subject to change without notice.

Orifice		Current	Input Power	Speed	Pressure		Air Flow		Air power	Efficiency
mm	in*	A	W	min ⁻¹	kPa	in H ₂ O	dm ³ /s	CFM	W	%
50	2	5,73	1295	31864	2,3	8,3	71,8	153,4	164	12,6
40	1 1/2	5,77	1305	31624	4,6	21,9	64,6	131,5	294	22,5
30	1 1/8	5,71	1293	31832	9,3	41,2	51,3	102,3	477	36,9
23	7/8	5,43	1230	33133	14,1	58,9	36,4	73,4	519	42,2
19	3/4	5,13	1166	34509	17,0	67,9	27,3	58,1	463	39,7
16	5/8	4,82	1097	35976	19,3	78,0	20,6	43,1	398	36,2
13	1/2	4,47	1019	37892	21,6	87,6	14,3	29,2	310	30,4
10	3/8	4,12	944	40073	23,6	95,7	8,9	17,4	210	22,2
6	1/4	3,84	881	42003	25,1	100,8	3,9	8,1	98	11,1
0	0	3,60	828	43978	26,0	104,3	0,0	0,0	0	0,0

Data above represent the performance of an average motor sample. Individual data may vary due to normal manufacturing variations.

* Orifice in inch is only approximative.