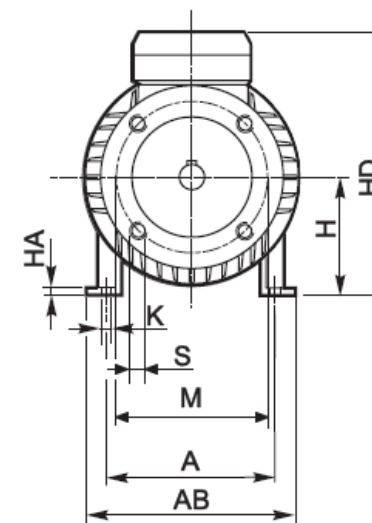
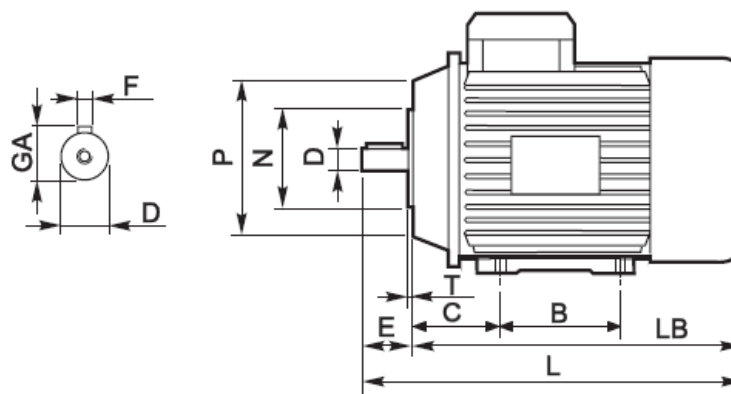



# B3/B14



	B3/B14											B3/B14								
	D	E	F	GA	L	S	LB	M	N	P	T	C	AB	A	B	H	HA	HD	K	
63	11	23	4	12.5	210	M5	187	75	60	90	2.5	40	117	90	80	63	7	148	7	
71	14	30	5	16.0	234	M6	204	85	70	105	2.5	45	135	113	90	71	7	172	7	
80	19	40	6	21.5	272	M6	232	100	80	120	3.0	50	150	126	100	80	9	197	10	
90S	24	50	8	27.0	296	M8	246	115	95	140	3.0	56	165	140	100	90	10	214	10	
90L	24	50	8	27.0	320	M8	270	115	95	140	3.0	56	165	140	125	90	10	214	10	
100	28	60	8	31.0	347	M8	287	130	110	160	3.5	63	194	160	140	100	12	243	12	
112	28	60	8	31.0	391	M8	331	130	110	160	3.5	70	230	190	140	112	12	260	12	