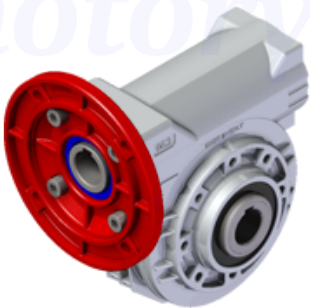


Price

Lead time

Configuration

Type:	P
Size:	045
Input:	71 B14 ø105
Output shaft/bore:	Standard ø18
Mounting:	FB
Mounting position:	B3
Input bore:	Standard



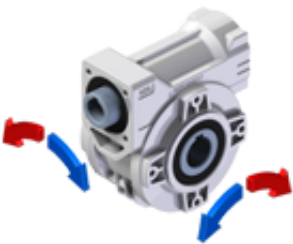
Technical data

Input rpm (n_1):	1400 min ⁻¹
Output rpm (n_2):	30.43 min ⁻¹
Ratio (i):	46.00
Nominal power (P_{1R}):	0.22 kW
Nominal torque (M_{2R}):	41 Nm
Dynamic efficiency (RD):	59%

Selection

Motor power (P_{1M}):	0.25 kW
Output torque (M_{2M}):	46 Nm
Service factor (f.s.):	0.9

Direction of rotation



Lubrication

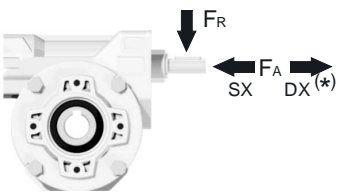
Oil quantity:	0.09l
AGIP:	Telium VSF 320
SHELL:	Omala S4 WE 320

On our website

Features	Reversibility
How to order	Thermal limit
Dimension	Atex certification
Accessories/options	Installation check list
Electric motors	Spare parts list
Selection guide - fs	Complete catalogue
Mounting pos. - lubricant	Selection by power (xls)
Calc. the overhung load	

Axial and radial loads

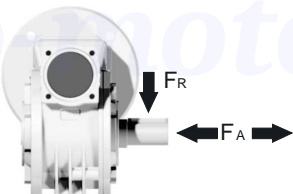
Input shaft



n_2 (min ⁻¹)	FA (N)	FR (N)
1400	42	210

*Strong axial loads in the DX direction are not allowed

Output shaft



n_2 (min ⁻¹)	FA (N)	FR (N)
200	180	900
150	200	1000
100	220	1100
75	240	1200
50	260	1400
25	300	1800
15	400	2000

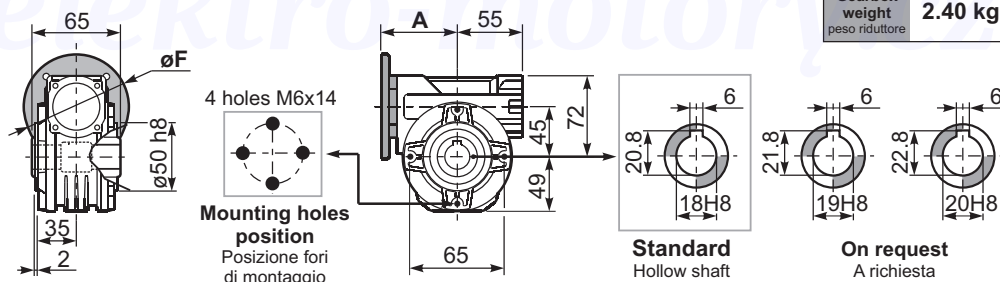
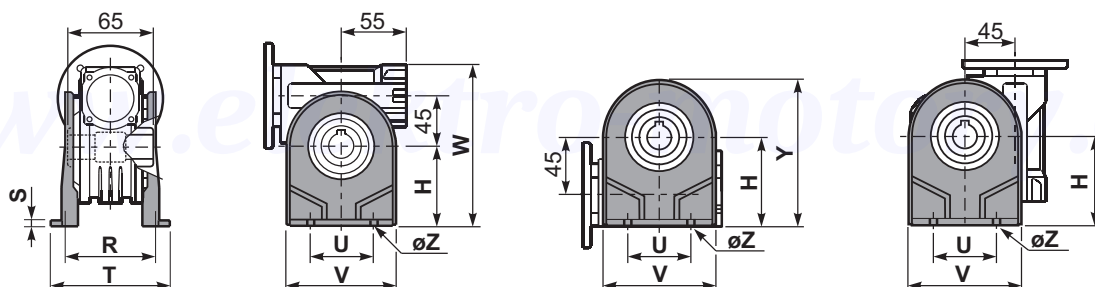
Note

3D dimensions on the Web

P045**FB**... Basic wormbox
Riduttore base

Gearbox weight peso riduttore	2.40 kg
---	----------------

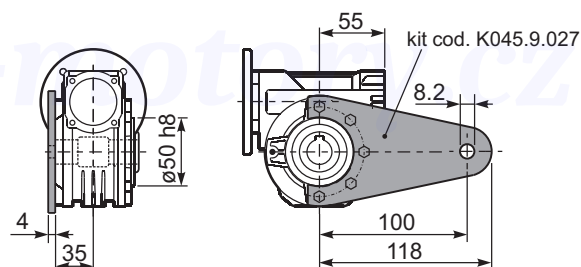
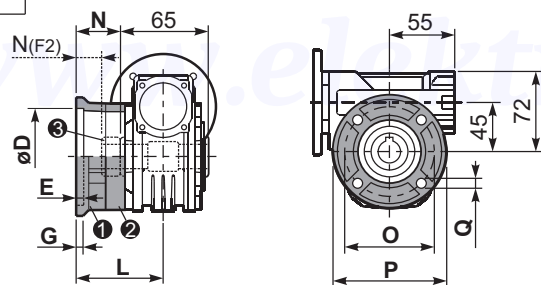
M. flanges	Kit code	øF	A
63B5	K050.4.041	138	74
71B5	K050.4.042	160	71.5
56B14	KC40.4.049	80	71.5
63B14	K050.4.047	90	74
71B14	K050.4.045	105	71.5

P045**PA...** Feet
PiediniP045**PB**... Feet
PiediniP045**PV**... Feet
Piedini

	H	R	S	T	U	V	Y	W	ØZ	kit code
type B	72	81	3	100	52	98	121	144	Ø10.5	K045.9.022
type S	71	84	8	100	70	90	120	143	Ø8	KS045.9.023

P045**FC**... Output flange
Flangia uscita

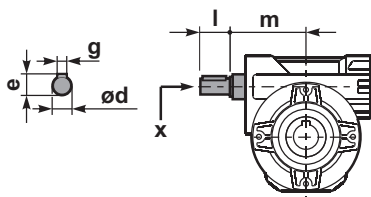
P045	BR...	Reaction arm Braccio di reazione
------	--------------	-------------------------------------



type B	øD	E	G	L	N	O	P	Q	kit code
FC	60 ^{+0.15} _{+0.05}	9	9	60.5	28	87	110	8.5	① K045.9.010 ② -
FL	60 ^{+0.15} _{+0.05}	9	9	90.5	58	87	110	8.5	① K045.9.010 ② K045.0.200

type S	øD	E	G	L	N	O	P	Q	kit code
F1	95 ^{+0.20} _{+0.15}	4	11	73.5	41	115	140	9	① KS045.9.013 ② -
F2	60 ^{+0.15} _{+0.05}	9	9	60.5	19	87	110	8.5	① KS045.9.010 ② S045.0.204
F3	80 ^{+0.15} _{+0.10}	3	8	51.5	19	100	120	9	① KS045.9.014 ② -

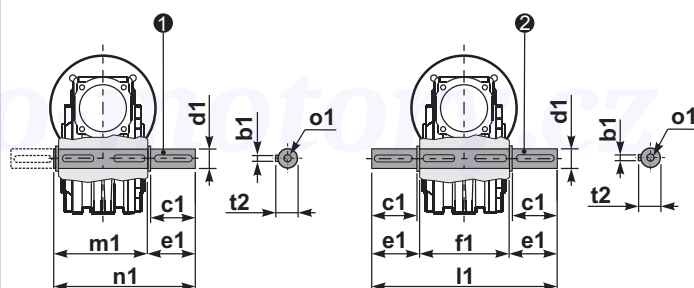
R045FB...	Input shaft Albero in entrata
------------------	----------------------------------



	ød	e	g	l	m	x	kit code
type B	11 h6	12.5	4	30	68	-	① K045.5.006 PAM71 ② -
type S	-	-	-	-	-	-	① - ② -

P045.....**S**... Single Shaft
Albero lento semplice

P045.....**D**... Double Shaft
Albero lento bisp.



① kit cod. K045.5.028 type **B**
kit cod. KS045.5.030 type **S**

② kit cod. K045.5.029 type **B**
kit cod. KS045.5.031 type **S**

	b1	c1	d1	e1	f1	l1	m1	n1	t2	o1
type B	6	32	$18_{-0.020}^{-0.005}$	43	65	151	70	113	20.5	M6x18
type S	6	40	$19_{-0.020}^{-0.005}$	58.8	65	182	70	128.5	21.5	M8x20