

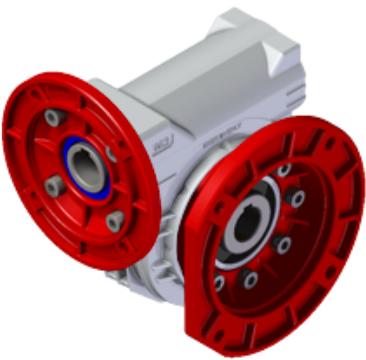
P045FC04S0-QB3-

Price

Lead time

Configuration

Type:	<b>P</b>
Size:	<b>045</b>
Input:	<b>71 B14 ø105</b>
Output shaft/bore:	<b>Special series</b> <input type="text"/>
Mounting:	<input type="text"/>
Mounting position:	<b>B3</b>
Input bore:	<b>Standard</b>
Coupling:	<b>-</b>



Technical data

Input rpm ( $n_1$ ):	<b>1400 min<sup>-1</sup></b>
Output rpm ( $n_2$ ):	<b>66.67 min<sup>-1</sup></b>
Ratio (i):	<b>21.00</b>
Nominal power ( $P_{1R}$ ):	<b>0.43 kW</b>
Nominal torque ( $M_{2R}$ ):	<b>41 Nm</b>
Dynamic efficiency (RD):	<b>67%</b>

Selection

Motor power ( $P_{1M}$ ):	<b>0.25 kW</b>
Output torque ( $M_{2M}$ ):	<b>24 Nm</b>
Service factor (f.s.):	<b>1.7</b>

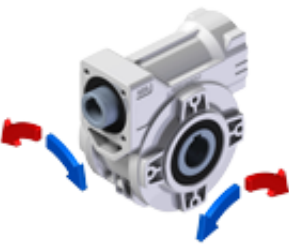
Lubrication

Oil quantity:	<b>0.09l</b>
AGIP:	<b>Telium VSF 320</b>
SHELL:	<b>Omala S4 WE 320</b>

On our website

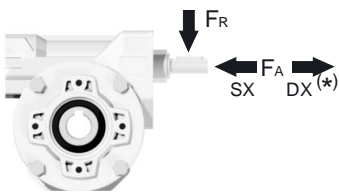
<a href="#">Features</a>	<a href="#">Reversibility</a>
<a href="#">How to order</a>	<a href="#">Thermal limit</a>
<a href="#">Dimension</a>	<a href="#">Atex certification</a>
<a href="#">Accessories/options</a>	<a href="#">Installation check list</a>
<a href="#">Electric motors</a>	<a href="#">Spare parts list</a>
<a href="#">Selection guide - fs</a>	<a href="#">Complete catalogue</a>
<a href="#">Mounting pos. - lubricant</a>	<a href="#">Selection by power (xls)</a>
<a href="#">Calc. the overhung load</a>	

Direction of rotation



Axial and radial loads

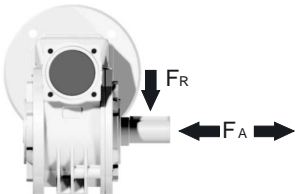
Input shaft



$n_2$ (min <sup>-1</sup> )	<b>FA</b> (N)	<b>FR</b> (N)
<b>1400</b>	42	210

\*Strong axial loads in the DX direction are not allowed

Output shaft



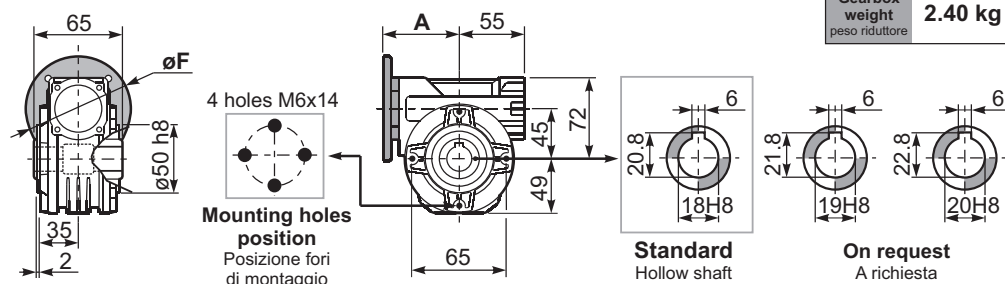
$n_2$ (min <sup>-1</sup> )	<b>FA</b> (N)	<b>FR</b> (N)
<b>200</b>	180	900
<b>150</b>	200	1000
<b>100</b>	220	1100
<b>75</b>	240	1200
<b>50</b>	260	1400
<b>25</b>	300	1800
<b>15</b>	400	2000

Note

3D dimensions on the Web

P045**FB**... Basic wormbox  
Riduttore base

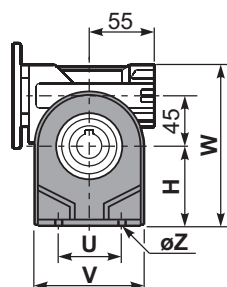
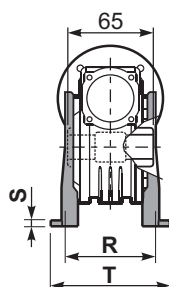
M. flanges	Kit code	øF	A
63B5	K050.4.041	138	74
71B5	K050.4.042	160	71.5
56B14	KC40.4.049	80	71.5
63B14	K050.4.047	90	74
71B14	K050.4.045	105	71.5



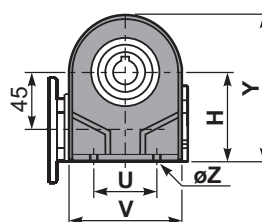
Gearbox weight  
peso riduttore **2.40 kg**

1

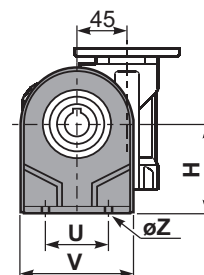
P045**PA**... Feet  
Piedini



P045**PB**... Feet  
Piedini

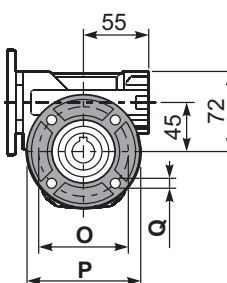
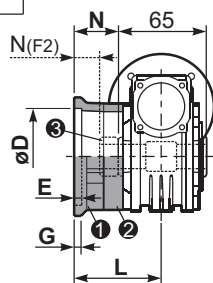


P045**PV**... Feet  
Piedini



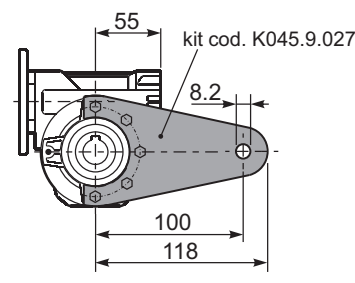
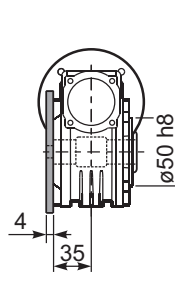
	H	R	S	T	U	V	Y	W	øZ	kit code
type B	72	81	3	100	52	98	121	144	ø10.5	K045.9.022
type S	71	84	8	100	70	90	120	143	ø8	KS045.9.023

P045**FC**... Output flange  
Flangia uscita



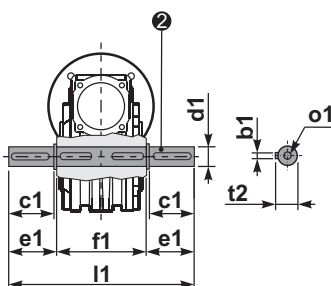
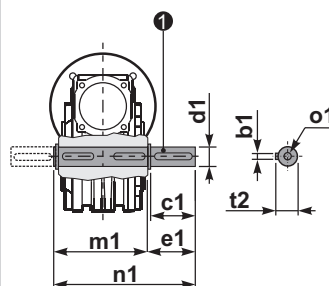
type B	øD	E	G	L	N	O	P	Q	kit code
FC	60 <sup>+0.15</sup> <sub>+0.05</sub>	9	9	60.5	28	87	110	8.5	1 K045.9.010 2 -
FL	60 <sup>+0.15</sup> <sub>+0.05</sub>	9	9	90.5	58	87	110	8.5	1 K045.9.010 2 K045.0.200
type S	øD	E	G	L	N	O	P	Q	kit code
F1	95 <sup>+0.20</sup> <sub>+0.15</sub>	4	11	73.5	41	115	140	9	1 KS045.9.013 2 -
F2	60 <sup>+0.15</sup> <sub>+0.05</sub>	9	9	60.5	19	87	110	8.5	1 KS045.9.010 2 S045.0.204
F3	80 <sup>+0.15</sup> <sub>+0.10</sub>	3	8	51.5	19	100	120	9	1 KS045.9.014 2 -

P045**BR**... Reaction arm  
Braccio di reazione



P045.....**S**... Single Shaft  
Albero lento semplice

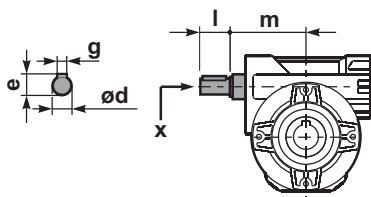
P045.....**D**... Double Shaft  
Albero lento bisp.



1 kit cod. K045.5.028 type B  
kit cod. KS045.5.030 type S

2 kit cod. K045.5.029 type B  
kit cod. KS045.5.031 type S

R045FB... Input shaft  
Albero in entrata



	ød	e	g	l	m	x	kit code
type B	11 h6	12.5	4	30	68	-	1 K045.5.006 PAM71 2 -
type S	-	-	-	-	-	-	1 - 2 -

	b1	c1	d1	e1	f1	l1	m1	n1	t2	o1
type B	6	32	18 <sup>-0.005</sup> <sub>-0.020</sub>	43	65	151	70	113	20.5	M6x18
type S	6	40	19 <sup>-0.005</sup> <sub>-0.020</sub>	58.8	65	182	70	128.5	21.5	M8x20